

Model	Imp Ω	Fs Hz	Qts	Vas Ltrs	Power	dB 283V/m	Xmax mm P	Box Liter Sealed/Vented	F3 Hz	Price Each
<b>Illuminator Series Tweeters</b>										
D2004/6020-00: ¾" dome tweeter, 55.5mm Ø, metal grill, chamber	4	600			60	88.4	0.2			\$118.00
D3004/6020-00: 1" dome tweeter, 62mm Ø, metal grill, chamber	4	700			50	89.2	0.2			\$119.00
D3004/6020-10: 1" dome tweeter, 62mm Ø, metal grill, deep chamber	4	425			50	89.6	0.2			\$126.00
R2004/6020-00: ¾" ring radiator, 55.5mm Ø, metal grill, chamber	4	600			60	86.9	0.2			\$145.00
R3004/6020-00: 1" ring radiator, 62mm Ø, metal grill, chamber	4	625			50	87.4	0.2			\$150.00
R3004/6020-10: 1" ring radiator, 62mm Ø, metal grill, deep chamber	4	420			50	87.4	0.2			\$160.00
D3004/6640-00: 1" Beryllium dome, AirCirc neo. magnet, Black	4	490			160@2.5k	90.7	0.2			\$520.00
D3004/6600-00: 1" dome, AirCirc, neodymium magnet	4	500			160@2.5k	91.6	0.2			\$220.00
D3004/6620-00: 1" dome, AirCirc, neo magnet, rubber front, Black	4	500			160@2.5k	91.6	0.2			\$221.00
D3004/6620-01: 1" dome, AirCirc, neo magnet, rubber front, Silver	4	500			160@2.5k	91.6	0.2			\$221.00
R3004/6620-00: 1" ring radiator, AirCirc, neo, rubber front, Black	4	520			160@2.5k	90.4	0.2			\$271.00
R3004/6620-01: 1" ring radiator, AirCirc, neo, rubber front, Silver	4	520			160@2.5k	90.4	0.2			\$271.00
<b>Illuminator Series Midranges</b>										
12MU/4731T: 4" midrange, paper cone, neo magnet, underhung VC	4	64	0.24	5.4	80	90	3.5	0.1 / 0.1	190 / 115	\$253.00
12MU/8731T: 4" midrange, paper cone, neo magnet, underhung VC	8	66	0.29	5.9	80	87.2	3.5	0.1 / 0.1	190 / 115	\$253.00
<b>Illuminator Series Woofers</b>										
15WU/4741T: 5.25" woofer, paper cone, neo magnet, underhung VC	4	34	0.23	20.1	80	85.9	9	0.15 / 0.25	115 / 60	\$304.00
15WU/8741T: 5.25" woofer, paper cone, neo magnet, underhung VC	8	35	0.26	20.1	80	83.4	9	0.15 / 0.25	105 / 58	\$304.00
18WU/4741T: 6.5" woofer, paper cone, neo magnet, underhung VC	4	30	0.29	49.9	80	87.2	9	0.25 / 0.5	80 / 55	\$306.00
18WU/8741T: 6.5" woofer, paper cone, neo magnet, underhung VC	8	31	0.33	49	80	85.4	9	0.35 / 0.6	70 / 50	\$306.00
18WU/4747T: 6.5" woofer, aluminum cone, neo magnet, underhung	4	32	0.28	48.7	80	88.1	9	0.2 / 0.45	97 / 59	\$259.00
18WU/8747T: 6.5" woofer, aluminum cone, neo magnet, underhung	8	33	0.31	49.2	80	85.5	9	0.25 / 0.6	84 / 55	\$259.00
<b>Revelator Series Tweeters</b>										
R2904/7000-00: Premium Ring Radiator - Silver	4	520			160@2.5k	94.5	0.2			\$345.00
R2904/7000-05: Premium Ring Radiator - Black w/silver plug	4	520			160@2.5k	94.5	0.2			\$345.00
R2904/7000-09: Premium Ring Radiator - Black	4	520			160@2.5k	94.5	0.2			\$345.00
D2904/7100-02: Premium Wide Surround Tweeter - Silver	4	520			160@2.5k	94.5	0.2			\$285.00
D2904/7100-03: Premium Wide Surround Tweeter - Black	4	520			160@2.5k	94.5	0.2			\$285.00
D2905/9900: 1" textile dome, SD-2, LCD, NRC, CDD	8	500			225@2.8k	91	0.4			\$241.00
<b>Revelator Series Midranges</b>										
12M/4631G: 4.5" slit paper cone, neodymium magnet, R3	4	75	0.33	2.4	40@75	89	3.0	0.7 / 1.0	160 / 100	\$285.00
15M/4531K: 5" slit paper cone midrange, Glass former	4	35	0.22	24		90	3.0	3.0 / 5.0	100 / 70	\$222.00
<b>Revelator Series Mid/Bass &amp; Woofers</b>										
15W/4531G: 5" slit paper cone, NRCS, SD-1, R3, Glass former	4	39.5	0.32	16	60	87	6.5	4 / 6	88 / 58	\$223.00
15W/8530K-00: 5" paper cone, NRCS, SD-1, R3, Glass former	8	30	0.27	28	60	85.5	6.5	5.1 / 7.4	77 / 55	\$212.00
15W/8530K-01: 5" paper cone, NRCS, SD-1, R3, Glass former	8	30	0.35	28	60	84.5	6.5	9.5 / 15	60 / 40	\$212.00
18W/4531G: 7" slit paper cone, SD-1, R3, Glass former	4	33	0.35	42	70	90	6.5	14 / 23	65 / 41	\$232.00
18W/8531G: 7" slit paper cone, SD-1, R3, Glass former	8	28	0.36	59	60	87	6.5	21 / 36	54 / 35	\$225.00
22W/4851T: 8" hard paper cone, SD-1, Titanium former	4	20.5	0.22	127	170	89	9.0	10 / 28	70 / 40	\$344.00
22W/8851T: 8" hard paper cone, SD-1, Titanium former	8	21	0.25	127	170	88	9.0	18 / 34	60 / 38	\$347.00
22W/8857T: 8" Black Aluminum cone, SD-1, Titanium former	8	23	0.30	89	170	89	9.0	14 / 35	60 / 38	\$308.00
26W/8861T: 10" hard paper cone, SD-1, Titanium former	8	19	0.31	234	170	88.5	9.0	55 / 90	40 / 28	\$375.00
26W/4867T: 10" Black Aluminum cone, SD-1, Titanium former	4	18	0.30	223	170	89	9.0	46 / 71	43 / 29	\$339.00
26W/8867T: 10" Black Aluminum cone, SD-1, Titanium former	8	19	0.29	179	170	87	9.0	36 / 57	46 / 31	\$354.00
23W/4557T-00: 10" Aluminum Cone, SD-1, Titanium former, Silver	4	20.5	0.44	43.5	225	83	13	28 / 59	33 / 27	\$385.00
23W/0-00-00: 10" Aluminum Cone Passive Radiator, Silver					Fs 10.5 Hz, Sd 232 cm <sup>2</sup> , Mms 400g, Vas 43.5 Ltrs, Qms 11.5, Excursion ±20mm					\$163.00
23W/4557T-02: 10" Aluminum Cone, SD-1, Titanium former, Black	4	20.5	0.44	43.5	225	83	13	28 / 59	33 / 27	\$385.00
23W/0-00-02: 10" Aluminum Cone Passive Radiator, Black					Fs 10.5 Hz, Sd 232 cm <sup>2</sup> , Mms 400g, Vas 43.5 Ltrs, Qms 11.5, Excursion ±20mm					\$163.00
<b>Classic Series Tweeters</b>										
D2008/8512: ¾" dome, chamber	8	800			150#4k	90	0.7			\$77.00
D2010/8513: ¾" dome, chamber, foam on faceplate, ff	8	800			150@4k	90	0.7			\$77.00
D2905/9300: 1" textile dome, chamber, FF	8	650			150@2.5k	90	0.4			\$129.00
D2905/9500: 1" textile dome, NRC, FF	8	550			150@2.5k	90	0.4			\$132.00
D2905/9700: 1" textile dome, SD-2, LCD, NRC	8	500			225@2.8k	89.5	0.4			\$164.00
D2904/9800: 1" aluminum dome, diffuser, SD-2, NRC	4	500			160@2.8k	90	0.1			\$206.00



Model	Imp $\Omega$	Fs Hz	Qts	Vas Ltrs	Power	dB 283V/m	Xmax mm P	Box Liter Sealed/Vented	F3 Hz	Price Each
<b>Classic Series Mid/Tweeter</b>										
D3806/8200: 1.5" textile dome mid/tweeter	8	450			100@1.5k	89	0.4			\$194.00
<b>Classic Series Midranges</b>										
13M/8636: 4.5" yellow kevlar cone	8	77	0.32	3	100@300	86.5	1.5	1.5 / -	200 / -	\$221.00
13M/8640: 4.5" impregnated paper cone	8	64	0.24	5	100@300	87.5	1.5	1.5 / -	220 / -	\$216.00
<b>Classic Series Woofers</b>										
18W/8535: 7" carbon paper cone, SD-1, R3	8	26	0.38	72	70	86.5	5.0	30 / 46	48 / 33	\$174.00
18W/8542: 7" paper cone, SD motor, foam surround	8	30	0.22	49	70	89	6.5	4 / 14	107 / 58	\$194.00
18W/8543: 7" clear poly cone, SD motor	8	30	0.22	49	70	88.5	6.5	4 / 14	107 / 58	\$188.00
18W/8545: 7" carbon paper cone, SD-1, R3	8	28	0.27	48	100	88	6.5	8 / 15	75 / 46	\$164.00
18W/8545K: 7" carbon paper cone, SD-1, R3, Glass former	8	28	0.28	48	100	87.5	6.5	9 / 19	70 / 42	\$167.00
18W/8546: 7" kevlar cone woofer, SD-1 motor	8	22	0.19	84	100	88	6.5	/ 14	/ 51	\$213.00
<b>Discovery Series Dome Tweeters</b>										
D2606/9200: 1" textile dome tweeter	6	1100			100@2.5k	91.4	0.5			\$36.10
D2606/9220: 1" textile dome tweeter with chamber, vented pole piece	6	650			100@2k	91	0.5			\$51.15
D2604/8330: 1" textile dome, large roll surround	4	475			100@2k	94.1	0.3			\$55.60
D2608/9130: 1" textile dome, double magnet, high efficiency	8	700			100@2k	91.3	0.5			\$80.75
R2604/8320: 1" textile ring tweeter, wave guide, chamber	4	550			100@2k	90.8	0.2			\$55.60
R2604/8330: 1" textile ring dome tweeter, wave guide, double magnet	4	630			100@2k	91.9	0.2			\$64.35
<b>Discovery Series Midranges</b>										
D7608/9200-10: 3" textile dome midrange, needs chamber on back	8	300			80@500	92	0.5	1 / -	500 / -	\$91.05
10F/4424G: 4" fiberglass cone midrange, neodymium magnet	4	90	0.30	2.06	15RMS	89.8	2.6	1.5 / -	270 / -	\$85.80
10F/8424G: 4" fiberglass cone midrange, neodymium magnet	8	90	0.37	2.1	15RMS	86.6	2.6	1.5 / -	210 / -	\$85.90
<b>Discovery Series Woofers</b>										
15M/4624G: 5" fiberglass cone midrange, phase plug, 24mm VC	4	100	0.43	3.6	75RMS	92.4	1.5	2.5 / -	205 / -	\$61.95
15W/4434G: 5" fiberglass cone woofer, shorting ring, 34mm VC	4	43	0.21	12.9	60RMS	89.7	4.3	3 / 3.5	160 / 80	\$65.80
15W/8434G: 5" fiberglass cone woofer, shorting ring, 34mm VC	8	45	0.25	12.9	60RMS	86.9	4.2	3 / 5	145 / 75	\$65.80
18W/4434G: 6" fiberglass cone woofer, shorting ring, 34mm VC	4	39	0.29	28.5	60RMS	90.8	4.3	5 / 12	100 / 60	\$67.40
18W/8434G: 6" fiberglass cone woofer, shorting ring, 34mm VC	8	40	0.34	28.5	60RMS	88	4.2	6 / 15	90 / 55	\$67.40
22W/4534G: 8" fiberglass cone woofer, shorting ring, 34mm VC	4	25	0.28	122	70RMS	92.4	5.7	15 / 35	70 / 45	\$81.60
22W/8534G: 8" fiberglass cone woofer, shorting ring, 34mm VC	8	26	0.34	118	70RMS	88.8	5.8	23 / 42	60 / 39	\$81.60
26W/4534G: 10" fiberglass cone woofer, shorting ring 34mm VC	4	24	0.30	162	70RMS	91	6	25 / 50	63 / 42	\$84.50
26W/8534G: 10" fiberglass cone woofer, shorting ring 34mm VC	8	25	0.37	153	70RMS	89	6	40 / 90	55 / 40	\$84.50
<b>Discovery Series Subwoofers and Passive Radiators</b>										
26W/4558T: 10" Aluminum cone subwoofer, shorting ring	4	20	0.28	104	150RMS	89	12.5	- / 56	- / 28	\$197.20
26W/0-00: 10" Aluminum cone passive radiator 400 gram	Use with 26W/4558T in 1 cubic foot for F3 of 35Hz use amp with 25Hz boost									\$112.75
30W/4558T: 12" Aluminum cone subwoofer, shorting ring	4	21	0.34	147	150RMS	89	12.5	- / 70	- / 30	\$225.30
30W/0-00: 12" Aluminum cone passive radiator 425 gram	Use with 30W/4558T in 2 cubic feet for F3 of 30Hz									\$126.85
<b>Discovery Series Autosound Component Systems</b>										
820012: 5" 2-way Component System, 2x 5" fiberglass cone woofers, 2x 19mm ring dome tweeters with flush/wedge mounts, 2x 2500Hz crossovers										\$368.00
820013: 6" 2-way Component System, 2x 6" fiberglass cone woofers, 2x 19mm ring dome tweeters with flush/wedge mounts, 2x 3000Hz crossovers										\$381.00
290001: Scan speak flow resistive aperiodic vent, used to lower the box Q of a sealed box. It makes the driver behave as if the box is 25% larger. Each										\$7.00
127001: Scan speaker grill for Classic 18W woofers, does not fit the Revelator or Illuminator woofers. Each										\$15.00

Founded in 1970, Scan-Speak still resides at our original address in Videbaek, Denmark. Located in the heart of the Jutland peninsula, our acoustic engineers adhere to our legendary policy of "Never compromise". We never compromise on our product quality, sound quality or pursuit of perfection in a given application. We set the loudspeaker industry's gold standard for audiophiles, and are constantly viewed as a market benchmark by other high-end speaker manufacturers.

For close to 40 years, Scan-Speak has been on a quest to create transducers that reveal the finest details in recordings, concealing nothing from the listener. This quest has resulted in several revolutionary inventions, where distortion in the magnet systems and the moving parts of the speaker is minimized. Our philosophy is simple: the emitted sound must be dynamic, giving a transient response and providing tonal balance.

Scan-Speak transducers have righteously been called "the best that money can buy", and we agree fully. All our transducers are hand-built with the utmost attention to quality at their core. Their prices reflect this, providing solutions targeted towards high-end audiophile applications. Needless to say, Scan-Speak is dedicated to proving an unwavering high-quality in manufacturing. This is topped off by an ISO 2000-9001 quality assurance.



### Illuminator D2004/6020-00 4Ω

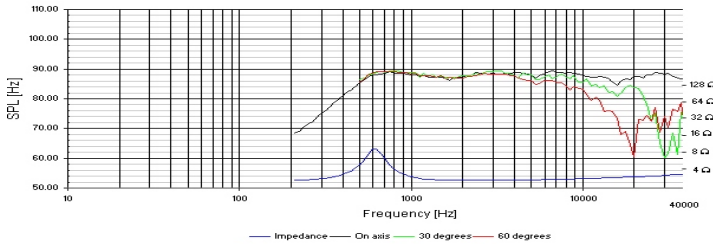
The face plates are die cast in aluminum for a beautiful look with maximum mechanical stability.

D2004/602000 is optimized to offer small package sizes that can fit into tight spaces such as compact cabinets and automotive trim pieces. The back chamber is die cast in aluminum and designed with a contoured shape that functions as a heat sink in high power applications.

Driver Highlights: 3/4" soft dome, compact size, ring neodymium magnet, aluminum faceplate and house, protective grill.



TECHNICAL DATA:			
Sensitivity 2.83V/1M	88.4dB	Lin. & max. excursion	±0.4 / ±01.8mm
Free air resonance F <sub>s</sub>	600 Hz	Force factor BL Product	1.3 Tm
DC resistance	3.4 ohm	Moving mass incl. air	0.22 g
V.C. inductance	0.02 mH	Outside diameter	55.5 mm
Power 12dB@Hz	60W	Cutout diameter	42.1 mm
Effective cone area	4.5 cm <sup>2</sup>	Flange thickness	5 mm
V.C. diameter	19 mm	Depth	29.3 mm
V.C. height	1.8 mm	Screw Circle	47.6 mm
Air gap height	2.5 mm		



### Illuminator D3004/6020-00 4Ω

The face plates are die cast in aluminum for a beautiful look with maximum mechanical stability.

D3004/602000 is optimized to offer small package sizes that can fit into tight spaces such as compact cabinets and automotive trim pieces.

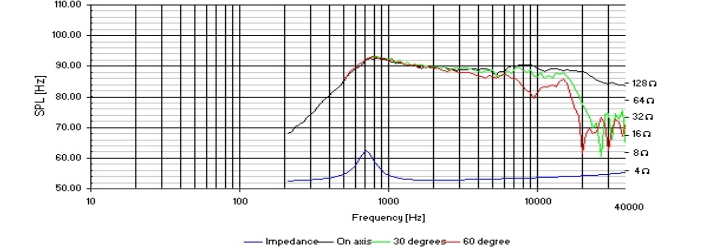
The back chamber is die cast in aluminum and designed with a contoured shape that functions as a heat sink in high power applications.

This tweeter is a good choice for home or autosound systems.

Driver Highlights: 1" soft dome, compact size, ring neodymium magnet, aluminum faceplate and house, protective grill.



TECHNICAL DATA:			
Sensitivity 2.83V/1M	89.2dB	Lin. & max. excursion	±0.2 / ±1.6 mm
Free air resonance F <sub>s</sub>	700 Hz	Force factor BL Product	1.7 Tm
DC resistance	3.0 ohm	Moving mass incl. air	0.35 g
V.C. inductance	0.02 mH	Outside diameter	61.9 mm
Power 12dB@Hz	50W	Cutout diameter	48.5 mm
Effective cone area	7 cm <sup>2</sup>	Flange thickness	5 mm
V.C. diameter	26 mm	Depth	21.5 mm
V.C. height	2.1 mm	Screw Circle	53.9 mm
Air gap height	2.5 mm		



### Illuminator D3004/6020-10 4Ω

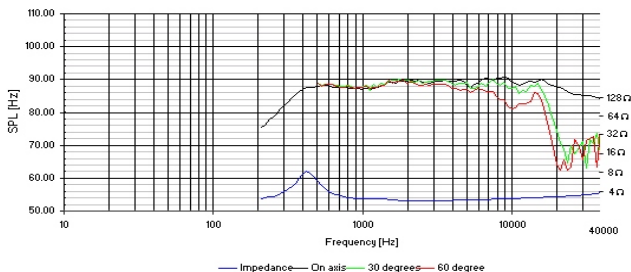
The face plates are die cast in aluminum for a beautiful look with maximum mechanical stability. D3004/602010 is optimized to offer small package sizes that can fit into tight spaces such as compact cabinets and automotive trim pieces.

The back chamber is die cast in aluminium and designed with a contoured shape that functions as a heat sink in high power applications.

Driver Highlights: 1" soft dome, compact size, ring neodymium magnet, aluminium faceplate and house, protective grill, large chamber.



TECHNICAL DATA:			
Sensitivity 2.83V/1M	89.6dB	Lin. & max. excursion	±0.2 / ±1.6 mm
Free air resonance F <sub>s</sub>	425 Hz	Force factor BL Product	1.7 Tm
DC resistance	3.0 ohm	Moving mass incl. air	0.35 g
V.C. inductance	0.02 mH	Outside diameter	61.9 mm
Power 12dB@Hz	50W	Cutout diameter	48.5 mm
Effective cone area	7 cm <sup>2</sup>	Flange thickness	5 mm
V.C. diameter	26 mm	Depth	55.4 mm
V.C. height	2.1 mm	Screw Circle	53.9 mm
Air gap height	2.5 mm		



### Illuminator R2004/6020-00 4Ω

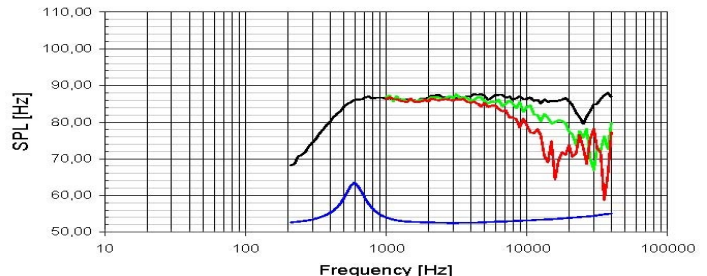
The face plates are die cast in aluminum for a beautiful look with maximum mechanical stability. R2004/602000 is optimized to offer small package sizes that can fit into tight spaces such as compact cabinets and automotive trim pieces.

The back chamber is die cast in aluminium and designed with a contoured shape that functions as a heat sink in high power applications.

Driver Highlights: 3/4" soft ring dome, compact size, ring neodymium magnet, aluminium faceplate and house, protective grill, chamber.



TECHNICAL DATA:			
Sensitivity 2.83V/1M	86.9dB	Lin. & max. excursion	±0.4 / ±1.6 mm
Free air resonance F <sub>s</sub>	600 Hz	Force factor BL Product	1.3 Tm
DC resistance	2.8 ohm	Moving mass incl. air	0.22 g
V.C. inductance	0.01 mH	Outside diameter	55.5 mm
Power 12dB@Hz	60W	Cutout diameter	42.1 mm
Effective cone area	4.6 cm <sup>2</sup>	Flange thickness	5 mm
V.C. diameter	19 mm	Depth	29.3 mm
V.C. height	1.8 mm	Screw Circle	47.6 mm
Air gap height	2.5 mm		



**Illuminator R3004/6020-00 4Ω**

The face plates are die cast in aluminum for a beautiful look with maximum mechanical stability. R3004/602000 is optimized to offer small package sizes that can fit into tight spaces such as compact cabinets and automotive trim pieces.

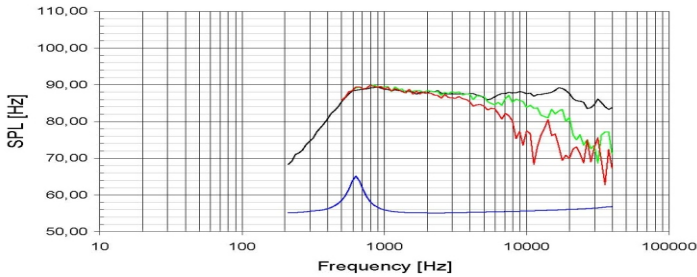


The back chamber is die cast in aluminium and designed with a contoured shape that functions as a heat sink in high power applications.

Driver Highlights: 1" soft ring dome, compact size, ring neodymium magnet, aluminium faceplate and house, protective grill, chamber.

**TECHNICAL DATA:**

Sensitivity 2.83V/1M	87.4dB	Lin. & max. excursion	±0.2 / ±1.6 mm
Free air resonance Fs	625 Hz	Force factor BL Product	1.7 Tm
DC resistance	3.0 ohm	Moving mass incl. air	0.35 g
V.C. inductance	0.02 mH	Outside diameter	61.9 mm
Power 12dB@Hz	50W	Cutout diameter	48.5 mm
Effective cone area	5.6 cm <sup>2</sup>	Flange thickness	5 mm
V.C. diameter	26 mm	Depth	21.5 mm
V.C. height	2.1 mm	Screw Circle	53.9 mm
Air gap height	2.5 mm		



**Illuminator R3004/6020-10 4Ω**

The face plates are die cast in aluminum for a beautiful look with maximum mechanical stability. D3004/602010 is optimized to offer small package sizes that can fit into tight spaces such as compact cabinets and automotive trim pieces.

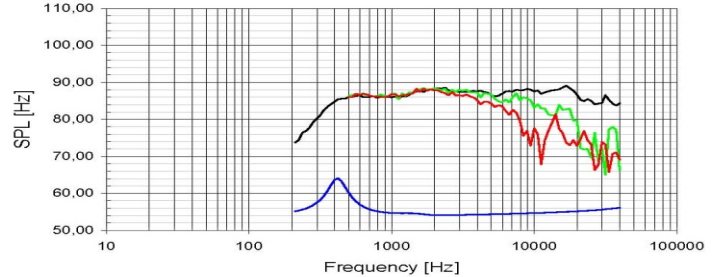


The back chamber is die cast in aluminium and designed with a contoured shape that functions as a heat sink in high power applications.

Driver Highlights: 1" soft ring dome, compact size, ring neodymium magnet, aluminium faceplate and house, protective grill, large chamber.

**TECHNICAL DATA:**

Sensitivity 2.83V/1M	87.4dB	Lin. & max. excursion	±0.2 / ±1.6 mm
Free air resonance Fs	420 Hz	Force factor BL Product	1.7 Tm
DC resistance	3.0 ohm	Moving mass incl. air	0.35 g
V.C. inductance	0.02 mH	Outside diameter	61.9 mm
Power 12dB@Hz	50W	Cutout diameter	48.5 mm
Effective cone area	5.6 cm <sup>2</sup>	Flange thickness	5 mm
V.C. diameter	26 mm	Depth	55.4 mm
V.C. height	2.1 mm	Screw Circle	53.9 mm
Air gap height	2.5 mm		



**Illuminator D3004/6640-00 4Ω**

This tweeter features a 99% pure Beryllium dome diaphragm. The large roll surround and Beryllium dome diaphragm provide a flat frequency response to above 40KHz with outstanding off-axis dispersion and a silky-smooth sound.

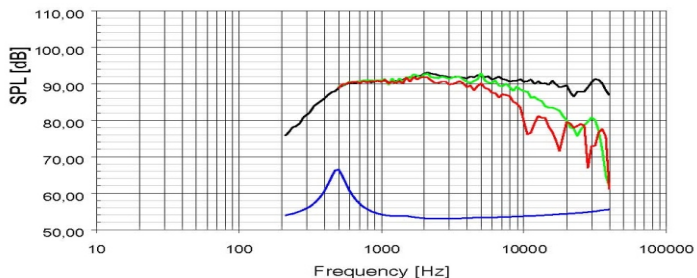


AirCirc magnet system with neodymium magnets and unique air flow.

Driver Highlights:- 1" Beryllium Diaphragm (99% pure Beryllium)- AirCirc Magnet System with 6 Neodymium Magnet slugs- Die cast rubber painted aluminium faceplate for maximum mechanical stability and beautiful look- Protective grill.

**TECHNICAL DATA:**

Sensitivity 2.83V/1M	91.5dB	Lin. & max. excursion	±0.2 / ±1.6 mm
Free air resonance Fs	500 Hz	Force factor BL Product	2.3 Tm
DC resistance	3.0 ohm	Moving mass incl. air	0.35 g
V.C. inductance	0.03 mH	Outside diameter	104 mm
Power 12dB@Hz	160W@2.5K	Cutout diameter	77 mm
Effective cone area	7 cm <sup>2</sup>	Flange thickness	5 mm
V.C. diameter	26 mm	Depth	23 mm
V.C. height	2.1 mm	Screw Circle	90 mm
Air gap height	2.5 mm		



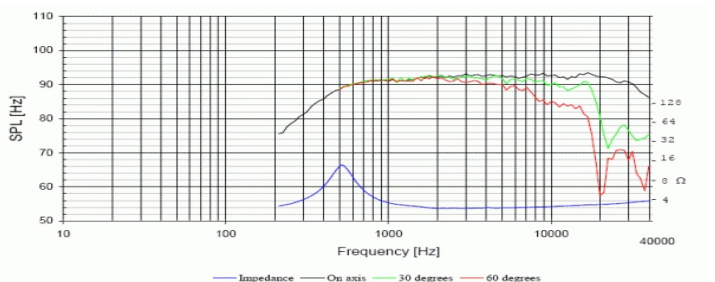
**Illuminator D3004/6600-00 4Ω**

The new D3004/660000 builds on the experience of the one-inch R29 ring radiator, resulting in low resonance frequency, but further provides the extended dispersion characteristics of a 3/4-inch dome. Tymphany's unique AirCirc Magnet System — named for the way it optimizes air flow within the chamber — rearranges the traditional magnet structure from a single magnet to an open magnetic circuit comprised of six separate neodymium slugs. This, in combination with the chamber, results in the elimination of the reflections and resonances that compromise the performance of traditional motors.



**TECHNICAL DATA:**

Sensitivity 2.83V/1M	91.6dB	Lin. & max. excursion	±0.2 / ±1.6 mm
Free air resonance Fs	500 Hz	Force factor BL Product	2.5 Tm
DC resistance	3.0 ohm	Moving mass incl. air	0.35 g
V.C. inductance	0.03 mH	Outside diameter	104 mm
Power 12dB@Hz	160W@2.5K	Cutout diameter	77 mm
Effective cone area	7 cm <sup>2</sup>	Flange thickness	5 mm
V.C. diameter	26 mm	Depth	23 mm
V.C. height	2.1 mm	Screw Circle	90 mm
Air gap height	2.5 mm		





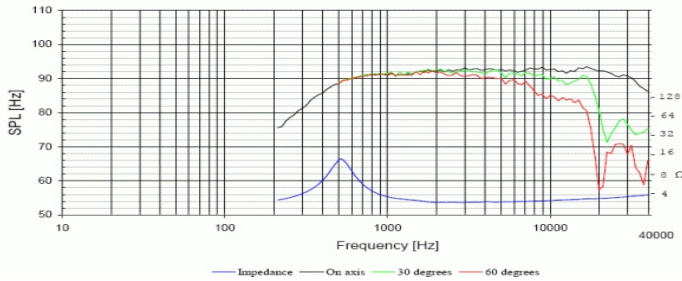
### Illuminator D3004/6620-00 4Ω

Tympany's unique AirCirc Magnet System - named for the way it optimizes air flow within the chamber - rearranges the traditional magnet structure from a single magnet to an open magnetic circuit comprised of six separate neodymium slugs. This, in combination with the chamber, results in the elimination of the reflections and resonances that compromise the performance of traditional motors. The D3004 gives engineers improved control over critical midrange performance, for superb vocal rendition and excellent imaging at all listening locations. Driver Highlights: 1" soft dome, AirCirc Magnet System, Rubber painted aluminum faceplate, Black



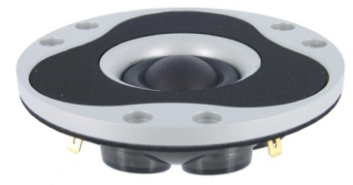
**TECHNICAL DATA:**

Sensitivity 2.83V/1M	91.6dB	Lin. & max. excursion	±0.2 / ±1.6 mm
Free air resonance Fs	500 Hz	Force factor BL Product	2.3 Tm
DC resistance	3.0 ohm	Moving mass incl. air	0.35 g
V.C. inductance	0.03 mH	Outside diameter	104 mm
Power 12dB@Hz	160W@2.5K	Cutout diameter	77 mm
Effective cone area	7 cm <sup>2</sup>	Flange thickness	5 mm
V.C. diameter	26 mm	Depth	23 mm
V.C. height	2.1 mm	Screw Circle	90 mm
Air gap height	2.5 mm		



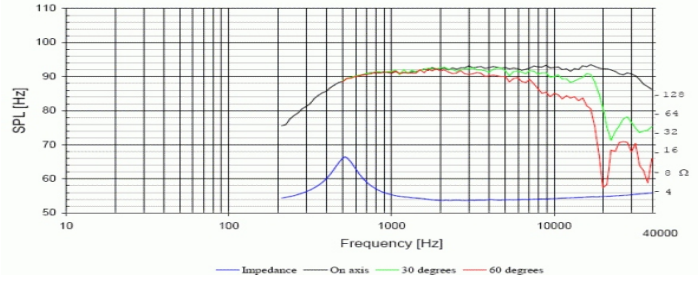
### Illuminator D3004/6620-01 4Ω

Tympany's unique AirCirc Magnet System - named for the way it optimizes air flow within the chamber - rearranges the traditional magnet structure from a single magnet to an open magnetic circuit comprised of six separate neodymium slugs. This, in combination with the chamber, results in the elimination of the reflections and resonances that compromise the performance of traditional motors. The D3004 gives engineers improved control over critical midrange performance, for superb vocal rendition and excellent imaging at all listening locations. Driver Highlights: 1" soft dome, AirCirc Magnet System, Rubber painted aluminum faceplate, Silver



**TECHNICAL DATA:**

Sensitivity 2.83V/1M	91.6dB	Lin. & max. excursion	±0.2 / ±1.6 mm
Free air resonance Fs	500 Hz	Force factor BL Product	2.3 Tm
DC resistance	3.0 ohm	Moving mass incl. air	0.35 g
V.C. inductance	0.03 mH	Outside diameter	104 mm
Power 12dB@Hz	160W@2.5K	Cutout diameter	77 mm
Effective cone area	7 cm <sup>2</sup>	Flange thickness	5 mm
V.C. diameter	26 mm	Depth	23 mm
V.C. height	2.1 mm	Screw Circle	90 mm
Air gap height	2.5 mm		



### Illuminator R3004/6620-00 4Ω

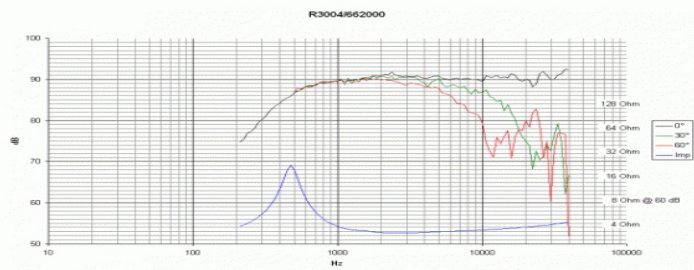
The ring radiator tweeter uses a phase plug. The dome is attached to the phase plug, so the radiating area is now concentrated around the voice coil. This offers more control and reduces distortion and loss that occur at the center of the dome on dome tweeters.



Tympany's unique AirCirc Magnet System - named for the way it optimizes air flow within the chamber - rearranges the traditional magnet structure from a single magnet to an open magnetic circuit comprised of six separate neodymium slugs. This, in combination with the chamber, results in the elimination of the reflections and resonances that compromise the performance. Black

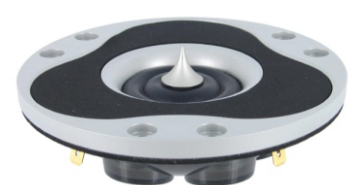
**TECHNICAL DATA:**

Sensitivity 2.83V/1M	90.4dB	Lin. & max. excursion	±0.2 / ±1.6 mm
Free air resonance Fs	520 Hz	Force factor BL Product	2.3 Tm
DC resistance	3.0 ohm	Moving mass incl. air	0.3 g
V.C. inductance	0.03 mH	Outside diameter	104 mm
Power 12dB@Hz	160W@2.5K	Cutout diameter	77 mm
Effective cone area	5.6 cm <sup>2</sup>	Flange thickness	5 mm
V.C. diameter	26 mm	Depth	23 mm
V.C. height	2.1 mm	Screw Circle	90 mm
Air gap height	2.5 mm		



### Illuminator R3004/6620-01 4Ω

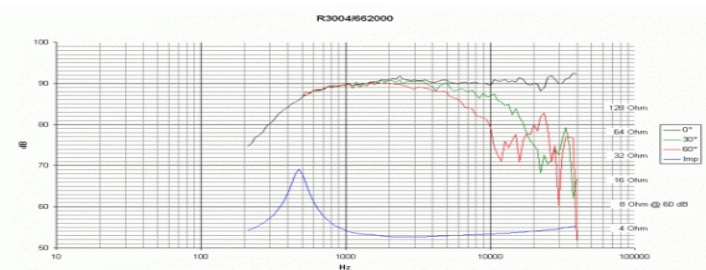
The ring radiator tweeter uses a phase plug. The dome is attached to the phase plug, so the radiating area is now concentrated around the voice coil. This offers more control and reduces distortion and loss that occur at the center of the dome on dome tweeters.



Tympany's unique AirCirc Magnet System - named for the way it optimizes air flow within the chamber - rearranges the traditional magnet structure from a single magnet to an open magnetic circuit comprised of six separate neodymium slugs. This, in combination with the chamber, results in the elimination of the reflections and resonances that compromise the performance. Silver

**TECHNICAL DATA:**

Sensitivity 2.83V/1M	90.4dB	Lin. & max. excursion	±0.2 / ±1.6 mm
Free air resonance Fs	520 Hz	Force factor BL Product	2.3 Tm
DC resistance	3.0 ohm	Moving mass incl. air	0.3 g
V.C. inductance	0.03 mH	Outside diameter	104 mm
Power 12dB@Hz	160W@2.5K	Cutout diameter	77 mm
Effective cone area	5.6 cm <sup>2</sup>	Flange thickness	5 mm
V.C. diameter	26 mm	Depth	23 mm
V.C. height	2.1 mm	Screw Circle	90 mm
Air gap height	2.5 mm		



**Illuminator 4.5" 12MU/4731T-00 4Ω**

The Illuminator midrange is based on compact underhung motor systems with large neodymium ring magnets. The patent pending motor offers a very long linear excursion together with a very high force factor. The top plate is shaped to "guide" the backside airflow around the motor and with the very open cast aluminum chassis design the driver is virtually free from compression. The cone and dust cap is made in one piece full cone technology.



Frame diameter 120mm, cutout hole size 101mm, depth 66mm.

TECHNICAL DATA:			
Sensitivity 2.83V/1M	90 dB	Lin. & max. excursion	±3.5 & ±10mm
Free air resonance Fs	64 Hz	Force factor BL Product	5.14 Tm
DC resistance	3.1 ohm	Moving mass incl. air	5.4 g
V.C. inductance	0.11 mH	Net weight	0.8 kg
Power 12dB@Hz	80W	Vas	5.4 ltrs
Effective cone area	58 cm <sup>2</sup>	Qms	3.64
V.C. diameter	32 mm	Qes	0.26
V.C. height	6.0 mm	Qts	0.24
Air gap height	13.0 mm		

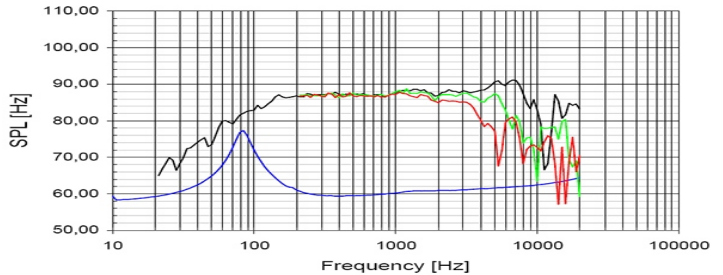
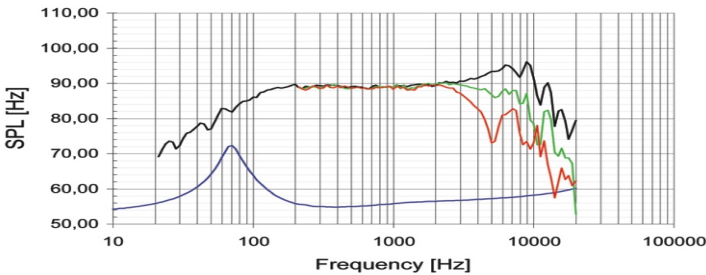
**Illuminator 4.5" 12MU/8731T-00 8Ω**

The Illuminator midrange is based on compact underhung motor systems with large neodymium ring magnets. The patent pending motor offers a very long linear excursion together with a very high force factor. The top plate is shaped to "guide" the backside airflow around the motor and with the very open cast aluminum chassis design the driver is virtually free from compression. The cone and dust cap is made in one piece full cone technology.



Frame diameter 120mm, cutout hole size 101mm, depth 66mm.

TECHNICAL DATA:			
Sensitivity 2.83V/1M	87.2 dB	Lin. & max. excursion	±3.4 & ±11mm
Free air resonance Fs	66 Hz	Force factor BL Product	6.1 Tm
DC resistance	5.9 ohm	Moving mass incl. air	4.7 g
V.C. inductance	0.13 mH	Net weight	0.8 kg
Power 12dB@Hz	80W	Vas	5.9 ltrs
Effective cone area	58 cm <sup>2</sup>	Qms	3.63
V.C. diameter	32 mm	Qes	0.31
V.C. height	6.2 mm	Qts	0.29
Air gap height	13.0 mm		



**Illuminator 5.25" 15WU/4741T-00 4Ω**

The Illuminator woofers are based on compact under-hung motor systems with large neodymium ring magnets. The patent pending motor offers a very long linear excursion together with a very high force factor. The top plate is shaped to "guide" the backside airflow around the motor and with the very open cast aluminum chassis design the driver is virtually free from compression.



F3 of 60Hz in 0.25 cubic foot vented.  
Frame diameter 149mm, cutout hole diameter 123mm, depth 91mm.

TECHNICAL DATA:			
Sensitivity 2.83V/1M	85.9dB	Lin. & max. excursion	±9 / ±12 mm
Free air resonance Fs	34 Hz	Force factor BL Product	6 Tm
DC resistance	3.2 ohm	Moving mass incl. air	13 g
V.C. inductance	0.5 mH	Net weight	1.6 kg
Power	80W	Vas	20.1 ltrs
Effective cone area	92 cm <sup>2</sup>	Qms	3.47
V.C. diameter	42 mm	Qes	0.25
VC height	8 mm	Qts	0.23
Air gap	20 mm		

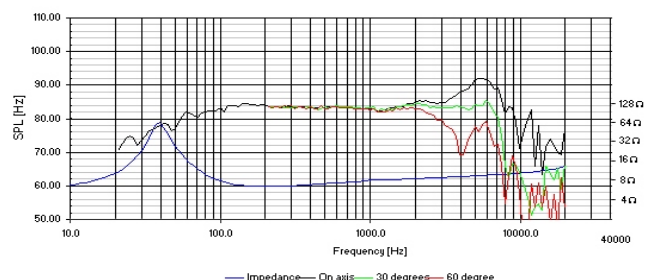
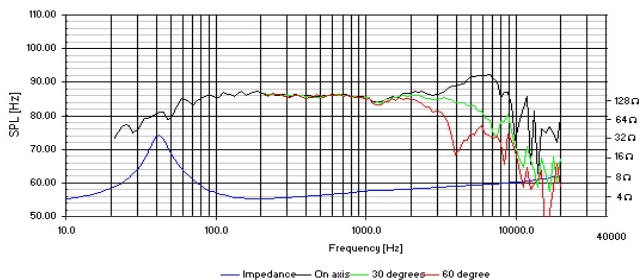
**Illuminator 5.25" 15WU/8741T-00 8Ω**

The Illuminator woofers are based on compact under-hung motor systems with large neodymium ring magnets. The patent pending motor offers a very long linear excursion together with a very high force factor. The top plate is shaped to "guide" the backside airflow around the motor and with the very open cast aluminum chassis design the driver is virtually free from compression.



F3 of 58Hz in 0.25 cubic foot vented.  
Frame diameter 149mm, cutout hole diameter 123mm, depth 91mm.

TECHNICAL DATA:			
Sensitivity 2.83V/1M	83.4dB	Lin. & max. excursion	±9 / ±12 mm
Free air resonance Fs	35 Hz	Force factor BL Product	6 Tm
DC resistance	5.9 ohm	Moving mass incl. air	12.3 g
V.C. inductance	0.41 mH	Net weight	1.6 kg
Power	80W	Vas	20.1 ltrs
Effective cone area	92 cm <sup>2</sup>	Qms	3.37
V.C. diameter	42 mm	Qes	0.28
VC height	8 mm	Qts	0.26
Air gap	20 mm		



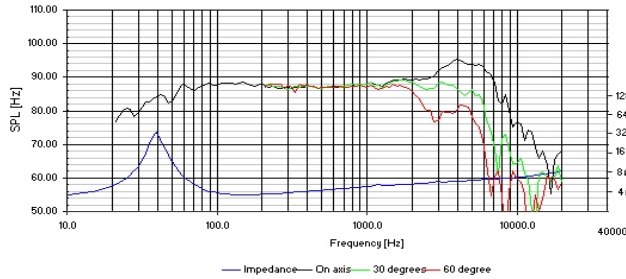
**Illuminator 6.5" 18WU/4741T-00 4Ω**

The Illuminator woofers are based on compact under-hung motor systems with large neodymium ring magnets. The patent pending motor offers a very long linear excursion together with a very high force factor. The top plate is shaped to "guide" the backside airflow around the motor and with the very open cast aluminum chassis design the driver is virtually free from compression.



F3 of 5Hz in 0.5 cubic foot vented .  
Frame diameter 184mm, cutout hole diameter 160mm, depth 98mm.

<b>TECHNICAL DATA:</b>			
Sensitivity 2.83V/1M	85.9dB	Lin. & max. excursion	±9 / ±12 mm
Free air resonance Fs	34 Hz	Force factor BL Product	6 Tm
DC resistance	3.2 ohm	Moving mass incl. air	13 g
V.C. inductance	0.5 mH	Net weight	1.7 kg
Power	80W	Vas	20.1 ltrs
Effective cone area	154 cm <sup>2</sup>	Qms	3.47
V.C. diameter	42 mm	Qes	0.25
VC height	8 mm	Qts	0.23
Air gap	20 mm		



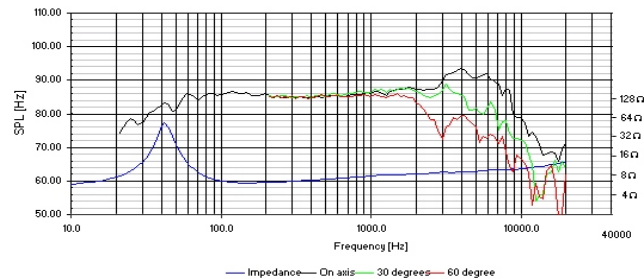
**Illuminator 6.5" 18WU/8741T-00 8Ω**

The Illuminator woofers are based on compact under-hung motor systems with large neodymium ring magnets. The patent pending motor offers a very long linear excursion together with a very high force factor. The top plate is shaped to "guide" the backside airflow around the motor and with the very open cast aluminum chassis design the driver is virtually free from compression.



F3 of 50Hz in 0.6 cubic foot vented .  
Frame diameter 184mm, cutout hole diameter 160mm, depth 98mm.

<b>TECHNICAL DATA:</b>			
Sensitivity 2.83V/1M	83.4dB	Lin. & max. excursion	±9 / ±12 mm
Free air resonance Fs	35 Hz	Force factor BL Product	6 Tm
DC resistance	5.9 ohm	Moving mass incl. air	12.3 g
V.C. inductance	0.41 mH	Net weight	1.7 kg
Power	80W	Vas	20.1 ltrs
Effective cone area	154 cm <sup>2</sup>	Qms	3.37
V.C. diameter	42 mm	Qes	0.28
VC height	8 mm	Qts	0.26
Air gap	20 mm		



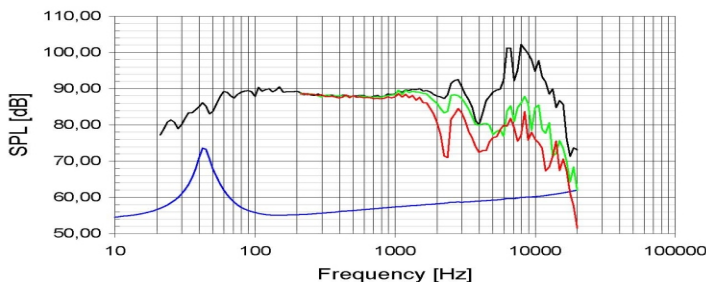
**Illuminator 6.5" 18WU/4747T-00 4Ω**

The Illuminator woofers are based on compact under-hung motor systems with large neodymium ring magnets. The patent pending motor offers a very long linear excursion together with a very high force factor. The top plate is shaped to "guide" the backside airflow around the motor and with the very open cast aluminum chassis design the driver is virtually free from compression.



Black anodized aluminum cone.  
Frame diameter 184mm, cutout hole diameter 160mm, depth 98mm.

<b>TECHNICAL DATA:</b>			
Sensitivity 2.83V/1M	88.1dB	Lin. & max. excursion	±9 / ±12 mm
Free air resonance Fs	32 Hz	Force factor BL Product	6 Tm
DC resistance	3.2 ohm	Moving mass incl. air	17 g
V.C. inductance	0.39 mH	Net weight	1.7 kg
Power	80W	Vas	48.7 ltrs
Effective cone area	154 cm <sup>2</sup>	Qms	3.42
V.C. diameter	42 mm	Qes	0.30
VC height	8 mm	Qts	0.28
Air gap	20 mm		



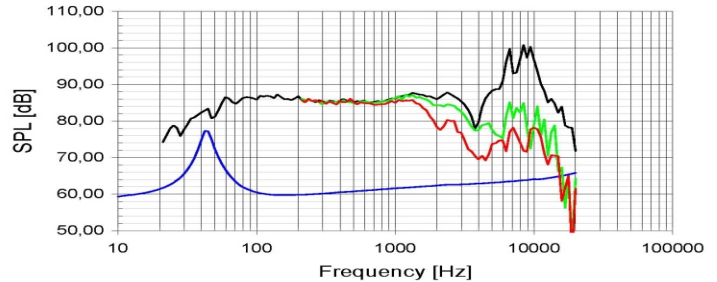
**Illuminator 6.5" 18WU/8747T-00 8Ω**

The Illuminator woofers are based on compact under-hung motor systems with large neodymium ring magnets. The patent pending motor offers a very long linear excursion together with a very high force factor. The top plate is shaped to "guide" the backside airflow around the motor and with the very open cast aluminum chassis design the driver is virtually free from compression.



Black anodized aluminum cone.  
Frame diameter 184mm, cutout hole diameter 160mm, depth 98mm.

<b>TECHNICAL DATA:</b>			
Sensitivity 2.83V/1M	85.5dB	Lin. & max. excursion	±9 / ±12 mm
Free air resonance Fs	33 Hz	Force factor BL Product	7.5 Tm
DC resistance	5.9 ohm	Moving mass incl. air	16 g
V.C. inductance	0.41 mH	Net weight	1.7 kg
Power	80W	Vas	49.2 ltrs
Effective cone area	154 cm <sup>2</sup>	Qms	3.31
V.C. diameter	42 mm	Qes	0.35
VC height	8 mm	Qts	0.31
Air gap	20 mm		



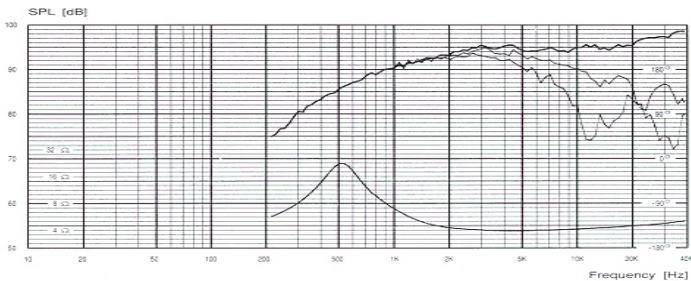
**R2904/7000 4Ω**

The R2904/7000 tweeter is the new flagship tweeter in the Scan-speak line. This tweeter incorporates many innovative design concepts.

The first notable difference is the use of a phase plug. The dome is attached to the phase plug, so the radiating area is now concentrated around the voice coil. This offers more control and reduces distortion and loss that occur at the center of the dome on dome tweeters. The phase plug also acts as a wave guide, reducing high frequency cancellations. A specially designed venting system uses a needle to cut down on turbulence in the air cavity. Better dynamics are achieved by not using ferrofluid, voice coil cooling is performed by the venting system and conduction through copper rings. The new SD-2 neodymium magnet system improves transient response.



<b>TECHNICAL DATA:</b>		Effective cone area	5.6 cm <sup>2</sup>
Sensitivity 2.83V/1M	94.5dB	V.C. diameter	28 mm
Free air resonance Fs	520 Hz	Lin. & max. excursion	±0.2 / ±1.6mm
DC resistance	3.0 ohm	Force factor BL Product	2.8 Tm
V.C. inductance	0.01 mH	Moving mass incl. air	0.3 g
Power 12dB@Hz	150W@2.7K	Net weight	0.42 kg

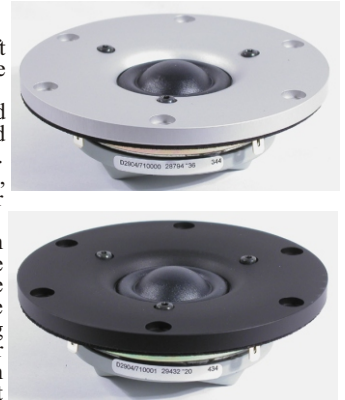


**D2904/7100 4Ω**

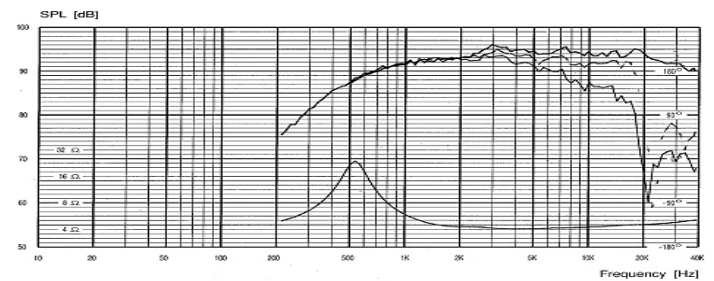
The D2904/7100 tweeter is a 1" soft dome with wide surround, using the same chambering as the Ring Radiator.

The carefully designed dome and surround result in a linear response and an exceptionally good off axis response. Note the smooth roll off on the low end, making this tweeter a good choice for simple slopes

A specially designed venting system uses a needle to cut down on turbulence in the air cavity. Better dynamics are achieved by not using ferrofluid, voice coil cooling is performed by the venting system and conduction through copper rings. The new SD-2 neodymium magnet system improves transient response.



<b>TECHNICAL DATA:</b>		Effective cone area	7 cm <sup>2</sup>
Sensitivity 2.83V/1M	94.5dB	V.C. diameter	28 mm
Free air resonance Fs	520 Hz	Lin. & max. excursion	±0.2 / ±1.6mm
DC resistance	3.0 ohm	Force factor BL Product	2.8 Tm
V.C. inductance	0.01 mH	Moving mass incl. air	0.35 g
Power 12dB@Hz	160W@2.5K	Net weight	0.42 kg

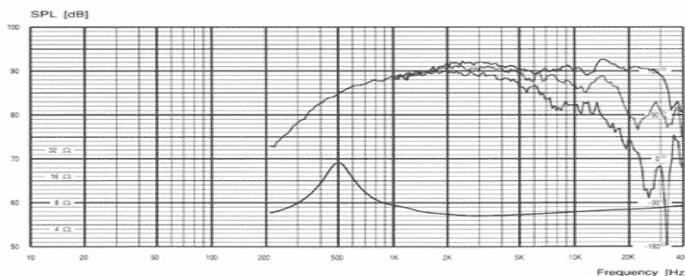


**D2905/9900**  
Revelator Dome Tweeter

The D2905/9900 is our state of the art tweeter. This "revelation" is a 1" textile dome tweeter that will reach new borders within high-end loudspeaker drive units. The new magnet system with SD caps and rings that eliminate the electrical phase shift. The new chamber design reduces air noises and compression. The 130mm machined aluminum front plate has more controlled directivity (down to 2Khz). The textile dome is hand coated and a special device is placed behind it to reduce dynamic compression.



<b>TECHNICAL DATA:</b>		V.C. height	-
Sensitivity 2.83V/1M	91dB	Air gap height	-
Free air resonance Fs	500 Hz	Lin. & max. excursion	±0.4/ ±1.5 mm
DC resistance	4.7 Ω	Air gap flux density	-
V.C. inductance	0.01 mH	BL	3.5 Tm
Power	225W@2.8kHz	Moving mass incl. air	0.45 g
Effective cone area	8.5 cm <sup>2</sup>	Net weight	0.8 kg
V.C. diameter	28 mm		

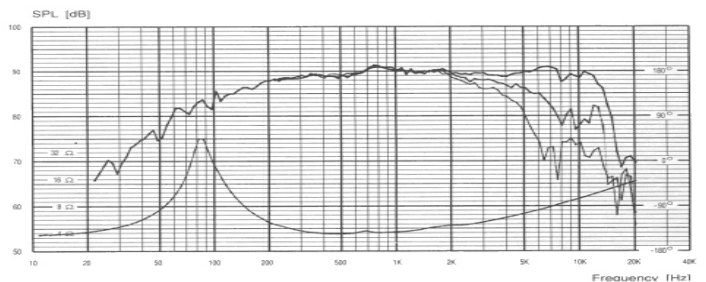


**12M/4631G 4Ω**  
Revelator 4.5" Midrange

The 12M/4631G is a Revelator driver using the "slit cone" technology. Some of the slits are used to control cone resonance and the other set of slits add rigidity. This speaker also has the new dynamic linear suspension for lower compression and higher linearity. Every facet of this driver is designed to reduce resonance in all structures. A neodymium magnet has been chosen to reduce the depth, yet increase the magnetic energy.



<b>TECHNICAL DATA:</b>		Lin. & max. excursion	±3 & ±7mm
Sensitivity 2.83V/1M	89 dB	Force factor BL Product	5.3 Tm
Free air resonance Fs	75 Hz	Moving mass incl. air	6.5 g
DC resistance	3.2 ohm	Net weight	0.6 kg
V.C. inductance	0.22 mH	Vas	2.4 ltrs
Power 12dB@Hz	40W	Qms	5.57
Effective cone area	49 cm <sup>2</sup>	Qes	0.35
V.C. diameter	38 mm	Qts	0.33
V.C. height	-		
Air gap height	-		



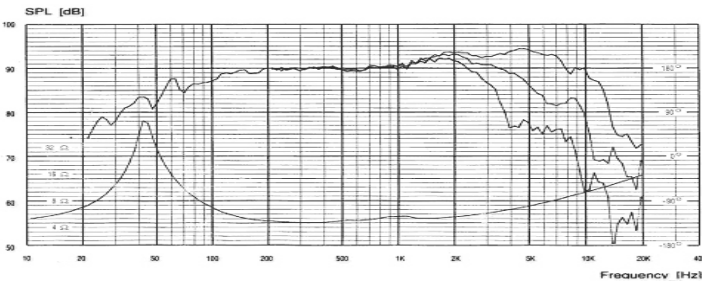
**15M/4531K 4Ω**

The 15M/4531K is a 5 1/2" Revelator midrange. It features a slit-paper non-resonant cone and dust cap structure, dynamic linear suspension, SD-1 magnet system, "Grasshopper" cast chassis with maximized air flow, glass fiber voice coil former and resonance terminating mounting system. The 15M/4531K is intended for use as a midrange, with a usable frequency range between 100Hz and 6kHz. As you can see from the response curve, this speaker has a lot of energy in the upper frequency range.



**TECHNICAL DATA:**

Sensitivity 2.83V/1M	90 dB	Lin. & max. excursion	±3 & ±8mm
Free air resonance Fs	35 Hz	Force factor BL Product	6.0 Tm
DC resistance	3.5 ohm	Moving mass incl. air	11 g
V.C. inductance	0.17 mH	Net weight	1.6 kg
Power 12dB@Hz	60W	Vas	24 ltrs
Effective cone area	95 cm <sup>2</sup>	Qms	4.8
V.C. diameter	38 mm	Qes	0.24
V.C. height		Qts	0.22
Air gap height	-		



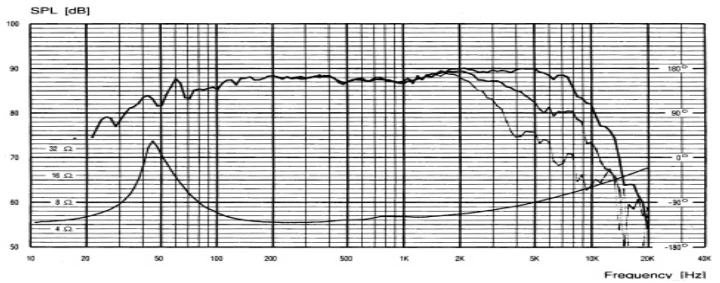
**15W/4531G-00 4Ω**

The 15W/4531G-01 is a 5 1/2" Revelator mid/woofer. It features a slit-paper uncoated non-resonant cone and dust cap structure, dynamic linear suspension, SD-1 magnet system, "Grasshopper" cast chassis with maximized air flow, glass fiber voice coil former and resonance terminating mounting system. The 15W/4531G provides a more extended frequency response than it's brothers, but still fantastic bass down to the mid 50's in a vented enclosure. This version is only available in 4 ohm.



**TECHNICAL DATA:**

Sensitivity 2.83V/1M	87 dB	Lin. & max. excursion	±6.5 & ±9mm
Free air resonance Fs	39.5 Hz	Force factor BL Product	5.7 Tm
DC resistance	3.4 ohm	Moving mass incl. air	13 g
V.C. inductance	0.25 mH	Net weight	1.6 kg
Power 12dB@Hz	60W	Vas	16 ltrs
Effective cone area	95 cm <sup>2</sup>	Qms	4.6
V.C. diameter	38 mm	Qes	0.34
V.C. height		Qts	0.32
Air gap height	-		



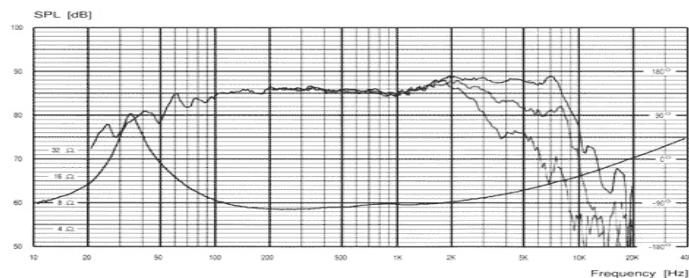
**15W/8530K-00/01**

The 15W/8530K-01 is a 5 1/2" Revelator mid/woofer. It features a non-resonant cone and dust cap structure, dynamic linear suspension, SD-1 magnet system, "Grasshopper" cast chassis with maximized air flow and resonance terminating mounting system. Less resonance in all structures, lower compression and higher linearity, faster termination of excess energy and higher sound pressure capability make the 15W have more musical and dynamic capability than any other 5 1/2" we know of. Wonderful bass in a small box!



**TECHNICAL DATA:**

Sensitivity 2.83V/1M	85.5/84.5dB	Lin. & max. excursion	±6.5 & ±9mm
Free air resonance Fs	30 Hz	Force factor BL Product	7/6.1 Tm
DC resistance	5.8 ohm	Moving mass incl. air	13 g
V.C. inductance	0.35 mH	Net weight	1.6/1.3 kg
Power 12dB@Hz	60W	Vas	28 ltrs
Effective cone area	95 cm <sup>2</sup>	Qms	4.9
V.C. diameter	38 mm	Qes	0.29/0.38
V.C. height		Qts	0.27/0.35
Air gap height	-		



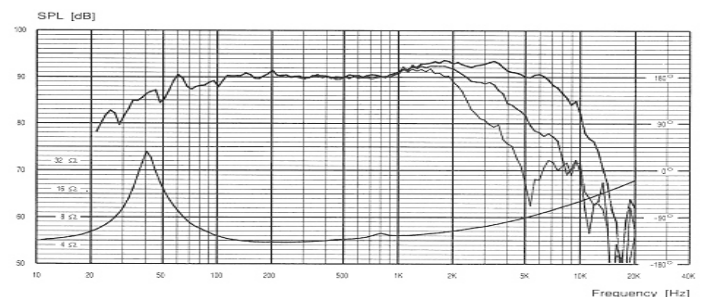
**18W/4531G 4Ω**

The 18W/4531G-00 is a 7" Revelator mid/woofer. It features a non-resonant cone and dust cap structure, dynamic linear suspension, SD-1 magnet system, "Grasshopper" cast chassis with maximized air flow and resonance terminating mounting system. Less resonance in all structures, lower compression and higher linearity, faster termination of excess energy and higher sound pressure capability. The 18W/4531G should have an F3 of about 65Hz sealed and 40Hz vented. This is a popular driver for automotive applications.



**TECHNICAL DATA:**

Sensitivity 2.83V/1M	90dB	VC height	-
Free air resonance Fs	33 Hz	Lin. & max. excursion	±6.5 / ±11 mm
DC resistance	3.4 ohm	Force factor BL Product	5.7 Tm
V.C. inductance	0.3 mH	Moving mass incl. air	17.5 g
Power	70W	Net weight	1.75 kg
Effective cone area	150 cm <sup>2</sup>	Vas	42 ltrs
V.C. diameter	38 mm	Qms	5.2

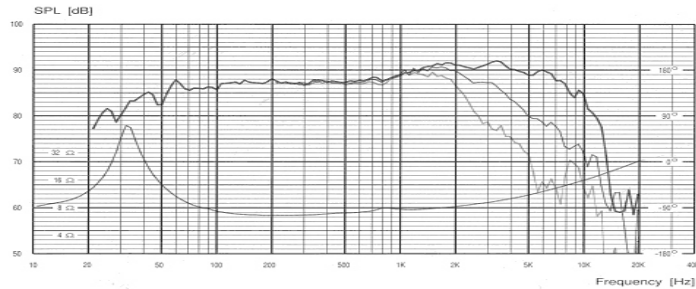


**18W/8531G 8Ω**

The 18W/8531G-00 is a 7" Revelator mid/woofer. It features a non-resonant cone and dust cap structure, dynamic linear suspension, SD-1 magnet system, "Grasshopper" cast chassis with maximized air flow and resonance terminating mounting system. Less resonance in all structures, lower compression and higher linearity, faster termination of excess energy and higher sound pressure capability. The 18W/8531G should have an F3 of about 50Hz sealed and 35Hz vented.



<b>TECHNICAL DATA:</b>			
Sensitivity 2.83V/1M	87dB	Lin. & max. excursion	±6.5 / ±11 mm
Free air resonance Fs	27.5 Hz	Force factor BL Product	6.7 Tm
DC resistance	5.8 ohm	Moving mass incl. air	15.5 g
V.C. inductance	0.35 mH	Net weight	1.75 kg
Power	70W	Vas	61 ltrs
Effective cone area	150 cm <sup>2</sup>	Qms	5.0
V.C. diameter	38 mm	Qes	0.39
VC height	-	Qts	0.36
Air gap	-		



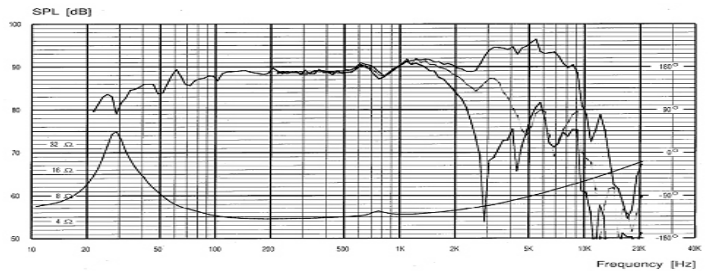
**22W/4851T 4Ω**

The 22W/4851T is a new addition to the Revelator line. This robust 8" woofer was designed to provide deep and accurate bass in a small enclosure. This woofer features a 2" voice coil on a titanium former, a low loss linear suspension and symmetric drive motor. The deep set hard paper cone is attached to the frame with a minimal reflection rubber surround. The 9mm X-max insures good linear travel.



We suggest a 1.2 cubic foot enclosure with a 2"Ø vent by 8" long for and F3 of 50Hz.

<b>TECHNICAL DATA:</b>			
Sensitivity 2.83V/1M	89 dB	Lin. & max. excursion	±9 / ±14 mm
Free air resonance Fs	20.5 Hz	Force factor BL Product	8.2 Tm
DC resistance	3.7 ohm	Moving mass incl. air	32.5 g
V.C. inductance	0.3 mH	Net weight	3.6 kg
Power	170 W	Vas	127 ltrs
Effective cone area	220 cm <sup>2</sup>	Qms	5.2
V.C. diameter	50 mm	Qes	0.23
VC height	-	Qts	0.22
Air gap	-		



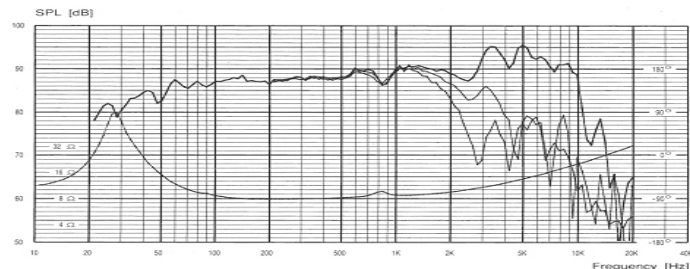
**22W/8851T 8Ω**

The 22W/8851T is a new addition to the Revelator line. This robust 8" woofer was designed to provide deep and accurate bass in a small enclosure. This woofer features a 2" voice coil on a titanium former, a low loss linear suspension and symmetric drive motor. The deep set hard paper cone is attached to the frame with a minimal reflection rubber surround. The 9mm X-max insures good linear travel.



We suggest a 1.2 cubic foot enclosure with a 2.5"Ø vent by 8" long for and F3 of 38Hz.

<b>TECHNICAL DATA:</b>			
Sensitivity 2.83V/1M	88 dB	Lin. & max. excursion	±9 / ±14 mm
Free air resonance Fs	21 Hz	Force factor BL Product	9.9 Tm
DC resistance	6.2 ohm	Moving mass incl. air	31 g
V.C. inductance	0.35 mH	Net weight	3.6 kg
Power	170 W	Vas	127 ltrs
Effective cone area	220 cm <sup>2</sup>	Qms	5.1
V.C. diameter	50 mm	Qes	0.26
VC height	-	Qts	0.25
Air gap	-		



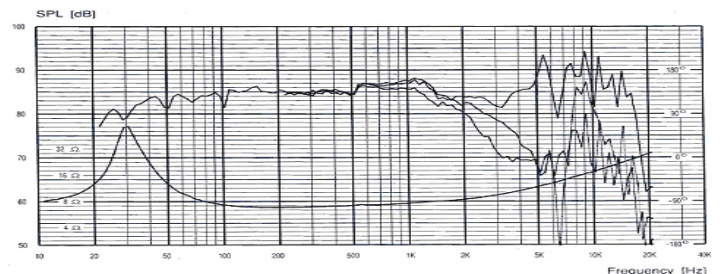
**22W/8857T 8**

The 22W/8857T is a new addition to the Revelator line. This robust 8" woofer was designed to provide deep and accurate bass in a small enclosure. This woofer features a 2" voice coil on a titanium former, a low loss linear suspension and symmetric drive motor. The deep set black aluminum cone is attached to the frame with a minimal reflection rubber surround. The 9mm X-max insures good linear travel.



We suggest a 1.2 cubic foot enclosure with a 2"Ø vent by 8" long for and F3 of 38Hz.

<b>TECHNICAL DATA:</b>			
Sensitivity 2.83V/1M	86 dB	Lin. & max. excursion	±9 / ±14 mm
Free air resonance Fs	23 Hz	Force factor BL Product	10.1 Tm
DC resistance	6.2 ohm	Moving mass incl. air	37 g
V.C. inductance	0.35 mH	Net weight	3.6 kg
Power	170 W	Vas	89 ltrs
Effective cone area	220 cm <sup>2</sup>	Qms	4.9
V.C. diameter	50 mm	Qes	0.32
VC height	-	Qts	0.30
Air gap	-		



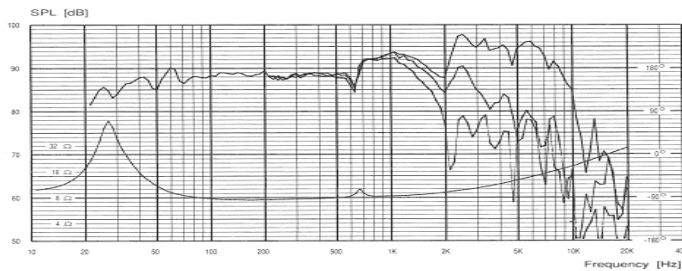
**26W/8861T 8Ω**

The 26W/8861T is a new addition to the Revelator line. This robust 10" woofer was designed to provide deep and accurate bass in a small enclosure. This woofer features a 2" voice coil on a titanium former, a low loss linear suspension and symmetric drive motor. The deep set hard paper cone is attached to the frame with a minimal reflection rubber surround. The 9mm X-max insures good linear travel.

We suggest a 2.75 cubic foot enclosure with a 3"Ø vent by 9.5" long for and F3 of 30Hz.



TECHNICAL DATA:			
Sensitivity 2.83V/1M	88.5 dB	Lin. & max. excursion	±9 / ±14 mm
Free air resonance Fs	19 Hz	Force factor BL Product	9.9 Tm
DC resistance	6.2 ohm	Moving mass incl. air	43.5 g
V.C. inductance	0.35 mH	Net weight	3.7 kg
Power	170 W	Vas	234 ltrs
Effective cone area	320 cm <sup>2</sup>	Qms	5.2
V.C. diameter	50 mm	Qes	0.33
VC height	-	Qts	0.31
Air gap	-		



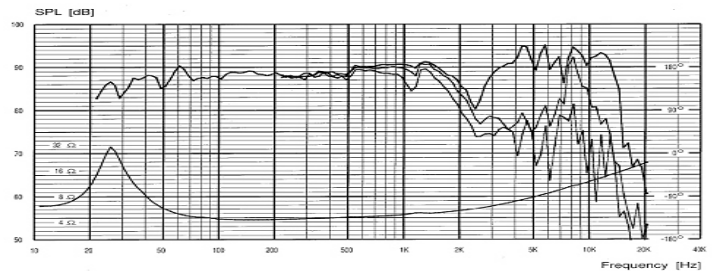
**26W/4867T 4Ω**

The 26W/4867T a new black Aluminum cone woofer. Aluminum is a good material for subwoofer cones, very stiff and light. These cones reduce distortion and also help cool the voice coil, by conducting heat away from the coil. This woofer has a low loss suspension for increased bass response and the SD-1 motor system for less intermodulation distortion. Very rigid cast frame, large windows.

We recommend a 2.5 cubic foot enclosure with a 3" diameter vent by 10" long, the F3 would be about 29Hz.



TECHNICAL DATA:			
Sensitivity 2.83V/1M	89 dB	Lin. & max. excursion	±9 / ±14 mm
Free air resonance Fs	18 Hz	Force factor BL Product	8.3 Tm
DC resistance	3.7 ohm	Moving mass incl. air	51 g
V.C. inductance	0.25 mH	Net weight	3.7 kg
Power	170 W	Vas	223 ltrs
Effective cone area	320 cm <sup>2</sup>	Qms	5.8
V.C. diameter	50 mm	Qes	0.31
VC height	-	Qts	0.30
Air gap	-		



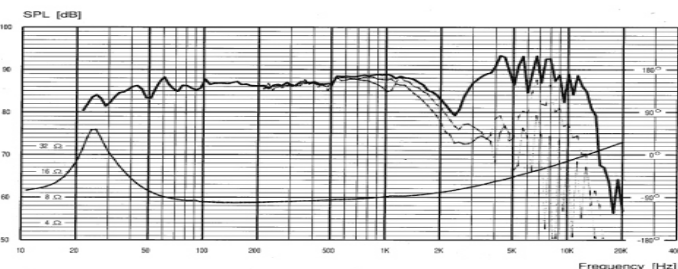
**26W/8867T 8Ω**

The 26W/8867T a new black Aluminum cone woofer. Aluminum is a good material for subwoofer cones, very stiff and light. These cones reduce distortion and also help cool the voice coil, by conducting heat away from the coil. This woofer has a low loss suspension for increased bass response and the SD-1 motor system for less intermodulation distortion. Very rigid cast frame, large windows.

We recommend a 2.3 cubic foot enclosure with a 3" diameter vent by 11" long, the F3 would be about 29Hz.



TECHNICAL DATA:			
Sensitivity 2.83V/1M	87 dB	Lin. & max. excursion	±9 / ±14 mm
Free air resonance Fs	19 Hz	Force factor BL Product	11.2 Tm
DC resistance	5.8 ohm	Moving mass incl. air	57 g
V.C. inductance	0.4 mH	Net weight	3.7 kg
Power	170 W	Vas	179 ltrs
Effective cone area	320 cm <sup>2</sup>	Qms	4.5
V.C. diameter	50 mm	Qes	0.31
VC height	-	Qts	0.29
Air gap	-		



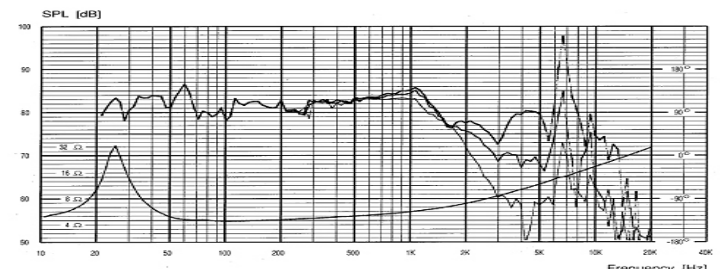
**23W/4557T 4Ω**

The 23W/4557T is a very high end subwoofer, designed to be used with a passive radiator in a small enclosure. This sub has a very rigid aluminum cone, low loss rubber surround and cast frame. The passive radiator is similar, but with a weight attached to the bass of the cone. The 23W/4557T is using the SD-1 motor system. There are gold plated binding posts and the woofer is covered by a decorative rubber cap.

Frequency response with the passive is down to 25Hz. One cubic foot sealed has an F3 of 33Hz. **Also in black cone.**



TECHNICAL DATA:			
Sensitivity 2.83V/1M	82 dB	Lin. & max. excursion	±13 / ±20 mm
Free air resonance Fs	20.5 Hz	Force factor BL Product	9.3 Tm
DC resistance	3.45 ohm	Moving mass incl. air	101 g
V.C. inductance	0.45 mH	Net weight	4.6 kg
Power	225 W	Vas	45.6 ltrs
Effective cone area	232 cm <sup>2</sup>	Qms	4.8
V.C. diameter	50 mm	Qes	0.52
VC height	-	Qts	0.47
Air gap	-	Black cone part#	23W/4557T-02



**23W/0-00 Passive**

This is the passive radiator intended for use with the 23W/4557T active woofer. We recommend putting both in a 1.0 cubic foot enclosure. This should yield a bass response down to 25Hz. The woofer should still be linear at 180 watts and have an output of about 104dB.

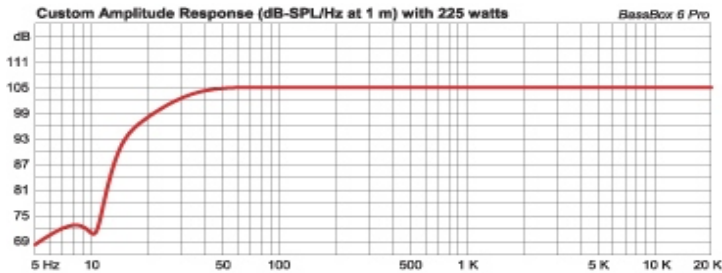
The curve below is a simulation of the woofer and passive radiator in a 1.0 cubic foot box. This was done in Bass Box Pro by Harris Technologies.

Also in black cone.



TECHNICAL DATA:

Sensitivity 2.83V/1M	- 90dB	max. excursion	±20 mm
Free air resonance Fs	10.5 Hz	Force factor BL Product	- Tm
DC resistance	- ohm	Moving mass incl. air	400 g
V.C. inductance	- mH	Net weight	1.2 kg
Power	- W	Vas	43.5 ltrs
Effective cone area	232 cm <sup>2</sup>	Qms	11.5
V.C. diameter	- mm	Qes	-
VC height	-	Qts	-
Air gap	-	Black cone part#	23W/0-00-02



**D2008/8512**

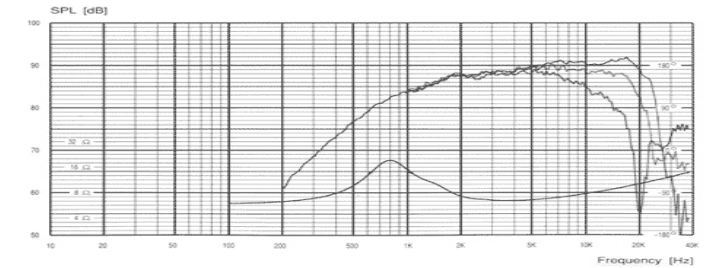
Similar to the D2008, but with several improvements, a foam impregnated front face plate and a lower resonance. Double chambered 3/4" damped textile dome tweeter with the same diaphragm and voice coil as the D2008.

The lower resonance of this driver will allow it to be crossed over lower than most other 3/4" dome tweeters, yet retain the low distortion and clarity of a 3/4" dome. We recommend a steeper x-over slope be used when the x-over point is below 3KHz.



TECHNICAL DATA:

Sensitivity 2.83V/1M	90dB	Lin. & max. excursion	±0.7 / ±1.2 mm
Free air resonance Fs	800 Hz	Force factor BL Product	2.4 Tm
DC resistance	5.7 ohm	Moving mass incl. air	0.25 g
V.C. inductance	0.07 mH	Net weight	0.4 kg
Power 12dB@Hz	150W@4K	Vas	-
Effective cone area	3.8 cm <sup>2</sup>	Qms	-
V.C. diameter	19 mm	Qes	-
V.C. height	-	Qts	-
Air gap height	-		



**D2010/8513**

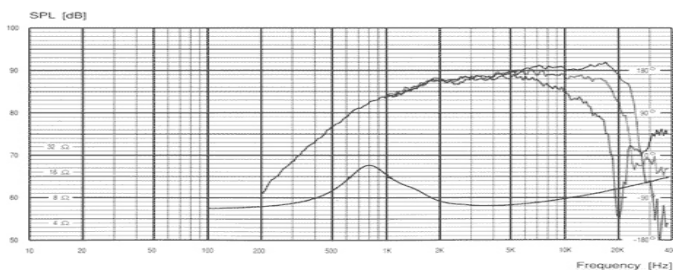
Similar to the D2008, but with several improvements, a foam impregnated front face plate and a lower resonance. Double chambered 3/4" damped textile dome tweeter with the same diaphragm and voice coil as the D2008.

The lower resonance of this driver will allow it to be crossed over lower than most other 3/4" dome tweeters, yet retain the low distortion and clarity of a 3/4" dome. We recommend a steeper x-over slope be used when the x-over point is below 3KHz.



TECHNICAL DATA:

Sensitivity 2.83V/1M	90dB	Lin. & max. excursion	±0.7 / ±1.2 mm
Free air resonance Fs	800 Hz	Force factor BL Product	2.4 Tm
DC resistance	5.7 ohm	Moving mass incl. air	0.25 g
V.C. inductance	0.07 mH	Net weight	0.4 kg
Power 12dB@Hz	150W@4K	Vas	-
Effective cone area	3.8 cm <sup>2</sup>	Qms	-
V.C. diameter	19 mm	Qes	-
V.C. height	-	Qts	-
Air gap height	-		



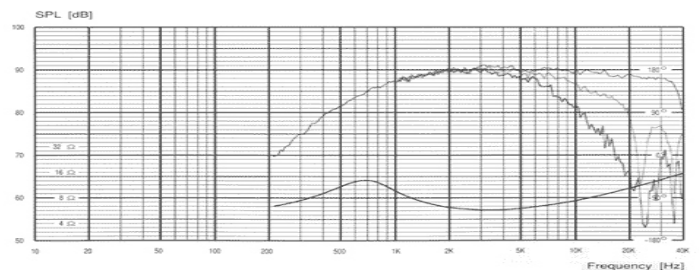
**D2905/9300**  
1" Dome Tweeter

The D2905/9300 is a 1" textile dome tweeter with a very flat frequency response and low distortion. The D2905/9300 achieves a lower resonance and increased clarity by using several coatings of damping material on the dome and chambering behind the dome. Both these damping factors and the use of a light magnetic fluid, reduce the resonances as much as possible, while reducing compression affects. This tweeters linear response and openness make it a good choice for any system.



TECHNICAL DATA:

Sensitivity 2.83V/1M	90dB	Lin. & max. excursion	±0.4 / ±1.5 mm
Free air resonance Fs	650 Hz	Force factor BL Product	3.5 Tm
DC resistance	4.7 ohm	Moving mass incl. air	0.45 g
V.C. inductance	0.08 mH	Net weight	0.7 kg
Power 12dB@Hz	150W@2.5K	Vas	-
Effective cone area	8.5 cm <sup>2</sup>	Qms	-
V.C. diameter	28 mm	Qes	-
V.C. height	-	Qts	-
Air gap height	-		

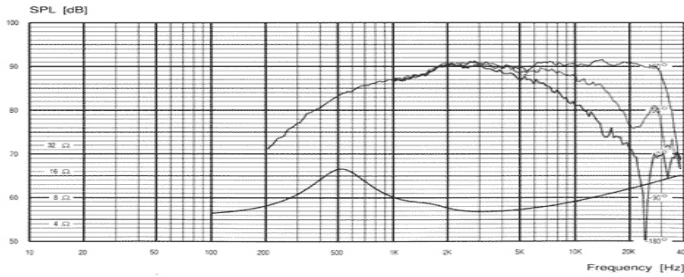


**D2905/9500**  
**1" Dome Tweeter**

The D2905/9500 is similar to the D2905/9300, but with non-resonant chamber. The optimized pole piece geometry reduces flow resistance and the anti-resonator-plug in the rear chamber eliminates turbulence. A light ferrofluid is used in the air gap to ensure optimal linear mechanical behavior and minimal micro-dynamic non-linearity. This tweeter has a smooth transparent sound and very low levels of distortion. A perfect choice for any high end system.



<b>TECHNICAL DATA:</b>			
Sensitivity 2.83V/1M	90dB	Lin. & max. excursion	$\pm 0.4 / \pm 1.5$ mm
Free air resonance F <sub>s</sub>	550 Hz	Force factor BL Product	3.5 Tm
DC resistance	4.7 ohm	Moving mass incl. air	0.45 g
V.C. inductance	0.08 mH	Net weight	0.7 kg
Power 12dB@Hz	150W@2.5K	Vas	-
Effective cone area	8.5 cm <sup>2</sup>	Qms	-
V.C. diameter	28 mm	Qes	-
V.C. height	-	Qts	-
Air gap height	-		

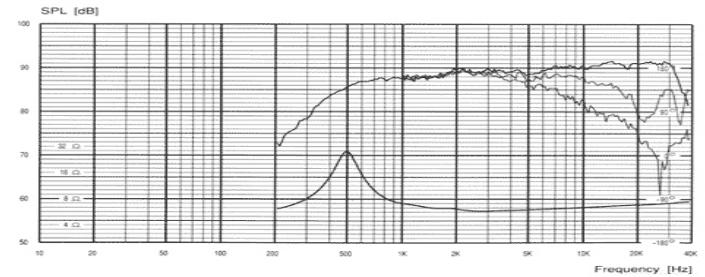


**D2905/9700**  
**1" Dome Tweeter**

The D2905/9700 uses the same hand coated dome and voice coil of the D2905/9500, but uses the motor system of the Revelator. The Symmetric Drive technology eliminates almost all electrical phase shift. The carefully machined top plate minimize air noise and compression. Copper caps act as heat conductors. High power handling is achieved without ferrofluid and improves micro-dynamic linearity. The tweeter has excellent dynamic and detailing capability.



<b>TECHNICAL DATA:</b>			
Sensitivity 2.83V/1M	89.5dB	Lin. & max. excursion	$\pm 0.4 / \pm 1.5$ mm
Free air resonance F <sub>s</sub>	500 Hz	BL	3.5 Tm
DC resistance	4.7 Ω	Moving mass incl. air	0.45 g
V.C. inductance	0.01 mH	Net weight	0.7 kg
Power	225W@2.8kHz	Vas	-
Effective cone area	8.5 cm <sup>2</sup>	Qms	-
V.C. diameter	28 mm	Qes	-
V.C. height	-	Qts	-
Air gap height	-		

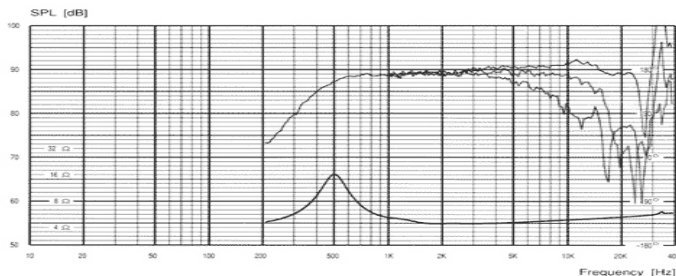


**D2904/9800 4Ω**

The D2904/9800 is a high-end 1" aluminum dome tweeter. The magnet system uses the Symmetric Drive technology that almost eliminates electrical phase shift. The specially designed chamber reduces air noise and compression. The geometry of the dome causes the "break-up" to appear beyond the audible range. A specially designed diffuser is used to equalize the response in the upper octave. The tweeter has a very clear and open sound.



<b>TECHNICAL DATA:</b>			
Sensitivity 2.83V/1M	90dB	Lin. & max. excursion	$\pm 0.1 / \pm 1.5$ mm
Free air resonance F <sub>s</sub>	500 Hz	Force factor BL Product	2.8 Tm
DC resistance	3.5 ohm	Moving mass incl. air	0.50 g
V.C. inductance	0.01 mH	Net weight	0.7 kg
Power 12dB@Hz	160W@2.8K	Vas	-
Effective cone area	8.5 cm <sup>2</sup>	Qms	-
V.C. diameter	28 mm	Qes	-
V.C. height	-	Qts	-
Air gap height	-		



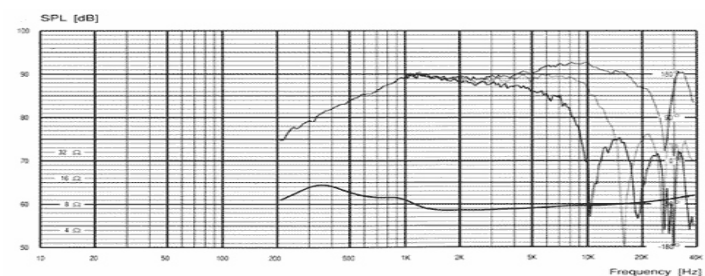
**D3806/8200**  
**1.5" Dome Mid/Tweeter**

The D3806/8200 is a 1.5" textile dome mid/tweeter. The large dome allows for a lower crossover point. Large dome typically have better transient response too. This tweeter is a good choice for use in a system where a lower crossover point is required, or where an upper mid is needed.



This tweeter has the SD motor system for reduced distortion and a tuned rear chamber. Flange is 125mm in diameter, 91mm cut out diameter and 47mm depth.

<b>TECHNICAL DATA:</b>			
Sensitivity 2.83V/1M	89dB	Lin. & max. excursion	$\pm 0.4 / \pm 1$ mm
Free air resonance F <sub>s</sub>	450 Hz	Force factor BL Product	3.8 Tm
DC resistance	5.7 ohm	Moving mass incl. air	0.9 g
V.C. inductance	0.04 mH	Net weight	1.1 kg
Power 12dB@Hz	100W@1.5K	Vas	-
Effective cone area	14 cm <sup>2</sup>	Qms	-
V.C. diameter	38 mm	Qes	-
V.C. height	-	Qts	-
Air gap height	-		



**18W/8535**

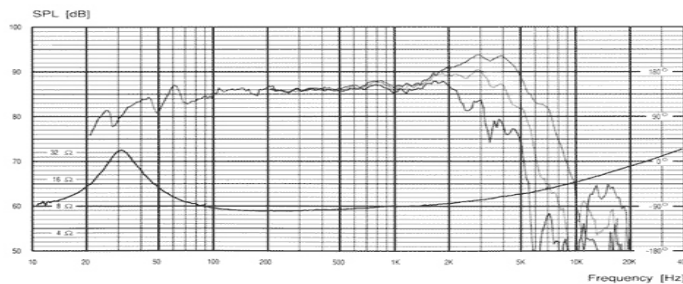
**7" Carbon/Paper Woofer**

The 18W/8535 woofer features the SD-1 magnet system which almost eliminates modulation and dynamic distortion and reduce clipping when the drivers is taken beyond linear excursion. The carbon fiber filled paper cone is impregnated and coated to damp resonance. The low loss rubber surround combines dynamic linearity with low coloration. The smaller magnet increases the Qts making this driver a good choice for a sealed enclosure.



**TECHNICAL DATA:**

Sensitivity 2.83V/1M	86.5dB	Lin. & max. excursion	±5 / ±10 mm
Free air resonance F <sub>s</sub>	26 Hz	Force factor BL Product	5.7 Tm
DC resistance	5.8 ohm	Moving mass incl. air	15.5 g
V.C. inductance	0.3 mH	Net weight	2.5 kg
Power	70W	Vas	72 liters
Effective cone area	145 cm <sup>2</sup>	Qms	2.50
V.C. diameter	38 mm	Qes	0.45
V.C. height	15 mm	Qts	0.38
Air gap height	5 mm		



**18W/8542**

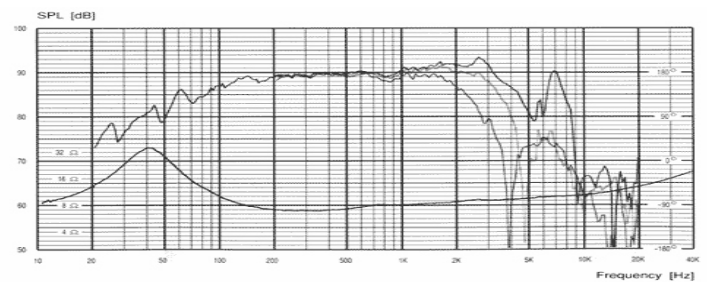
**7" Paper Cone Woofer**

The 18W/8542 is a classic paper cone woofer with foam surround. The back coated paper cone delivers smooth and warm sound reproduction. The speaker is intended for high end 2-way systems in bass reflex enclosures. This woofer has the large Symetric Drive (SD) magnet system for reduced distortion. The surround is made of double coated foam material with long term stability. A coating is used to dampen unwanted resonances where the surround is attached to the cone.



**TECHNICAL DATA:**

Sensitivity 2.83V/1M	89dB	Lin. & max. excursion	±6.5 / ±10mm
Free air resonance F <sub>s</sub>	30 Hz	Force factor BL Product	7.8 Tm
DC resistance	5.5 ohm	Moving mass incl. air	15 g
V.C. inductance	0.2 mH	Net weight	2.3 kg
Power	70W	Vas	49 liters
Effective cone area	135 cm <sup>2</sup>	Qms	1.7
V.C. diameter	42 mm	Qes	0.26
V.C. height	19 mm	Qts	0.22
Air gap height	6 mm		



**18W/8545**

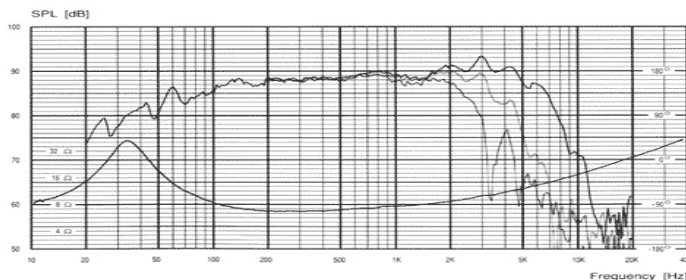
**7" Carbon fibre Paper Woofer**

This 7" features the heavily damped and carbon fibre impregnated paper cone that dampens resonances normally associated with stiff cones. The magnet system is the new SD-1 system which eliminates modulation and dynamic distortion, as well as clipping distortion created as it exceeds its maximum linear excursion. These designs all together make a drive unit with a very "open" sound with excellent detailing combined with low coloration and very precise imaging. Cast frame, rubber surround.



**TECHNICAL DATA:**

Sensitivity 2.83V/1M	88dB	Lin. & max. excursion	±6.5 / ±10mm
Free air resonance F <sub>s</sub>	28 Hz	Force factor BL Product	8.0 Tm
DC resistance	5.5 ohm	Moving mass incl. air	20 g
V.C. inductance	0.4 mH	Net weight	2.3 kg
Power	100W	Vas	48 liters
Effective cone area	145 cm <sup>2</sup>	Qms	2.30
V.C. diameter	42 mm	Qes	0.30
V.C. height	19 mm	Qts	0.27
Air gap height	6 mm		



**18W/8545K**

**7" Carbon fibre Paper Woofer**

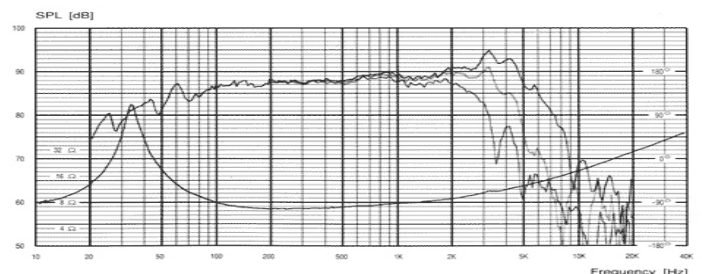
This 7" features the heavily damped and carbon fibre impregnated paper cone that dampens resonances normally associated with stiff cones. The magnet system is the new SD-1 system which eliminates modulation and dynamic distortion, as well as clipping distortion created as it exceeds its maximum linear excursion. This driver uses a fiberglass voice coil former.

Try it in a 1/2 cubic foot box with a 1.5" diameter vent by 5.2" long, f3 48Hz.



**TECHNICAL DATA:**

Sensitivity 2.83V/1M	87.5dB	Lin. & max. excursion	±6.5 / ±10mm
Free air resonance F <sub>s</sub>	28 Hz	Force factor BL Product	8.2 Tm
DC resistance	5.5 ohm	Moving mass incl. air	20.5 g
V.C. inductance	0.4 mH	Net weight	2.4 kg
Power	100W	Vas	48 liters
Effective cone area	145 cm <sup>2</sup>	Qms	5.20
V.C. diameter	42 mm	Qes	0.30
V.C. height	19 mm	Qts	0.28
Air gap height	6 mm		



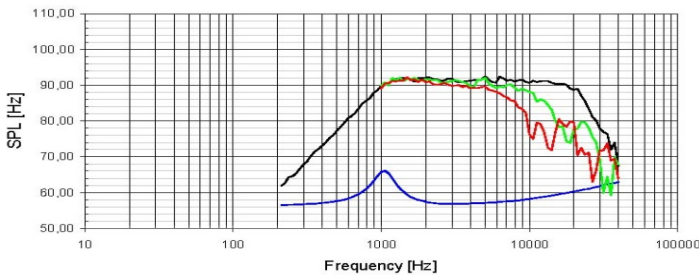
**D2606/9200 6Ω**

The D2606/9200 is a 1" coated silk fabric dome tweeter. This tweeter uses ferrofluid to cool the voice coil and reduce the resonance peak. The linear response face plate provides a very smooth response at a fairly high sensitivity. The voice coil is attached to the leads by a high power braided tinsel lead wire. A damped cavity in the pole pieces reduces reflections and lowers the resonance frequency. The tweeter has field repairable voice coil assemblies (600058). This tweeter was previously produced under the part number D27TG15-06 and could be a good replacement for D26TG05 tweeters too, but with 5 screw holes instead of 4.



TECHNICAL DATA:

Sensitivity 2.83V/1M	91.4dB	Lin. & max. excursion	±0.2 / ±1.6 mm
Free air resonance Fs	1100 Hz	Air gap flux density	-
DC resistance	4.6 ohm	Force factor BL Product	2.7 Tm
V.C. inductance	0.01 mH	Moving mass incl. air	0.3 g
Power 12dB@Hz	100W@2.5K	Outside diameter	104 mm
Effective cone area	7.1 cm <sup>2</sup>	Cutout diameter	72 mm
V.C. diameter	26 mm	Flange thickness	4.2 mm
V.C. height	1.6 mm	Depth	27.1 mm
Air gap height	2.5 mm	Screw Circle	94 mm



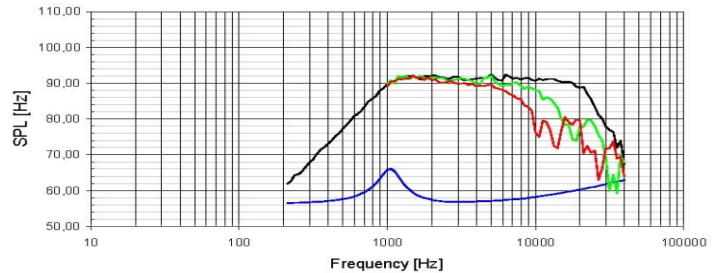
**D2606/9220 6Ω**

The D2606/9220 is a 1" coated silk fabric dome tweeter. This tweeter uses ferrofluid to cool the voice coil and reduce the resonance peak. The large rear chamber provides a low resonance frequency and reduces reflections. The low fs allows for a lower crossover point. by a high power braided tinsel lead wire. The tweeter has field repairable voice coil assemblies (600058). This tweeter can be used to be produced under the part number D27TG35-06 and is a good replacement for older D26TG35 tweeters. It can also replace the D27TG45, but with 4 screw holes instead of 5.



TECHNICAL DATA:

Sensitivity 2.83V/1M	91.4dB	Lin. & max. excursion	±0.2 / ±1.6 mm
Free air resonance Fs	850 Hz	Air gap flux density	-
DC resistance	4.6 ohm	Force factor BL Product	2.8 Tm
V.C. inductance	0.01 mH	Moving mass incl. air	0.33 g
Power 12dB@Hz	100W@2K	Outside diameter	104 mm
Effective cone area	7.1 cm <sup>2</sup>	Cutout diameter	72 mm
V.C. diameter	26 mm	Flange thickness	4.2 mm
V.C. height	2.1 mm	Depth	38.9 mm
Air gap height	2.5 mm	Screw Circle	94 mm



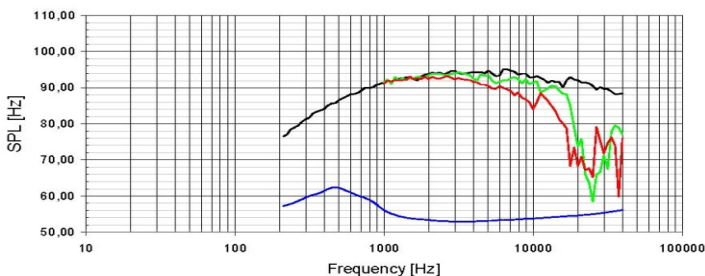
**D2604/8330 4Ω**

The D2604/8330 is a 1" textile dome with a large roll surround which provides extended frequency response above 40kHz. The double magnet provide greater efficiency as well as a chamber to reduce reflections and lower the resonance frequency. The tweeter uses high temperature copper-clad aluwire. The tweeter also has a well behaved roll off on the low end, which should allow the tweeter to use more simplified crossovers. The off axis response is also very good, making this tweeter a good choice for automotive systems too. The low fs allows for a lower crossover point.



TECHNICAL DATA:

Sensitivity 2.83V/1M	94.1dB	Linear excursion	±0.3 mm
Free air resonance Fs	475 Hz	Air gap flux density	-
DC resistance	2.8 ohm	Force factor BL Product	- Tm
V.C. inductance	- mH	Moving mass incl. air	0.42 g
Power 12dB@Hz	100W@2K	Outside diameter	104 mm
Effective cone area	8 cm <sup>2</sup>	Cutout diameter	72 mm
V.C. diameter	25 mm	Flange thickness	5 mm
V.C. height	2.0 mm	Depth	54.6 mm
Air gap height	2.5 mm	Screw Circle	92 mm



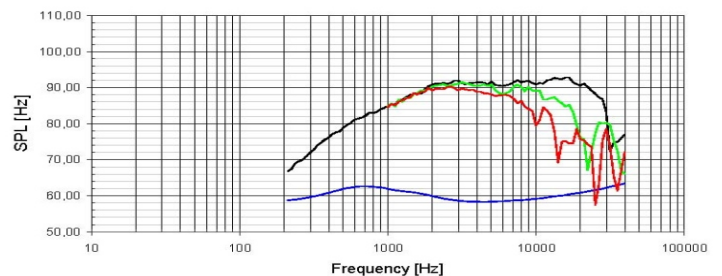
**D2608/9130 8Ω**

The D2608/9130 has a very light 1" textile dome with high internal damping. The optimized magnet system feature dual magnets, low compression and magnetic cooling fluid. The magnet system is designed to reduce reflections and turbulence. The face plate is black die cast aluminum. The 8 ohm impedance, yet high efficiency of 91.3dB makes this a rather unique tweeter. The low resonance frequency and magnetic fluid will allow for a low crossover point. This tweeter is a good choice for all high end speaker systems.



TECHNICAL DATA:

Sensitivity 2.83V/1M	91.3dB	Linear excursion	±0.5 mm
Free air resonance Fs	700 Hz	Air gap flux density	-
DC resistance	5.6 ohm	Force factor BL Product	- Tm
V.C. inductance	- mH	Moving mass incl. air	- g
Power 12dB@Hz	100W@2K	Outside diameter	104 mm
Effective cone area	7 cm <sup>2</sup>	Cutout diameter	72 mm
V.C. diameter	26 mm	Flange thickness	4.5 mm
V.C. height	1.5 mm	Depth	32.3 mm
Air gap height	2.5 mm	Screw Circle	92 mm



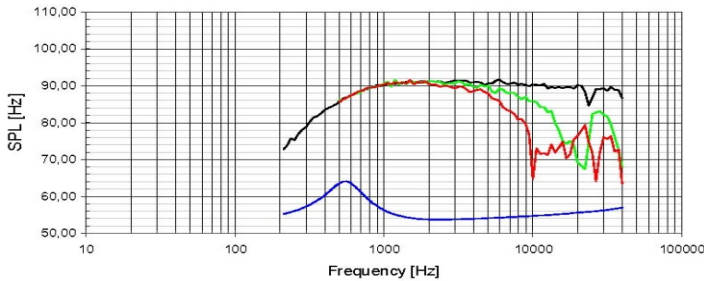


## R2604/8320 4Ω

The R2604/8320 features the unique dual ring radiator diaphragm made from coated silk fabric. The tweeter also uses a patented wave guide center plug to reduce distortion. The low resonance frequency allows for a low crossover point. A special chamber lowers the fs and reduces internal reflections. The frequency range extends beyond 40kHz! Copper-clad aluwire assures good power handling at lower crossover points. This tweeter has quickly become a favorite with loudspeaker designers. The D2604/8320 used to be produced under the part number XT25TG30.



TECHNICAL DATA:			
Sensitivity 2.83V/1M	90.8dB	Linear excursion	±0.2 mm
Free air resonance Fs	550 Hz	Air gap flux density	-
DC resistance	2.9 ohm	Force factor BL Product	- Tm
V.C. inductance	- mH	Moving mass incl. air	0.3 g
Power 12dB@Hz	100W@2.5K	Outside diameter	104 mm
Effective cone area	5.4 cm <sup>2</sup>	Cutout diameter	72 mm
V.C. diameter	25 mm	Flange thickness	5 mm
V.C. height	2.2 mm	Depth	39.8 mm
Air gap height	2.5 mm	Screw Circle	92 mm

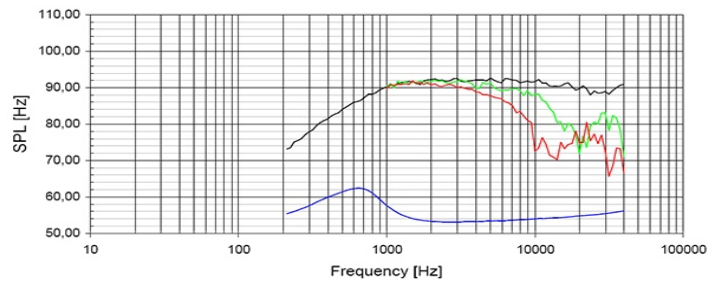


## R2604/8330 4Ω

The R2604/8330 features the unique dual ring radiator diaphragm made from coated silk fabric. The tweeter also uses a patented wave guide center plug to reduce distortion. The low resonance frequency allows for a low crossover point. A special chamber lowers the fs and reduces internal reflections. The frequency range extends beyond 40kHz! Copper-clad aluwire assures good power handling at lower crossover points. The Double magnet increases efficiency and extends the upper frequency range. The D2604/8330 used to be produced under the part number XT25BG60.



TECHNICAL DATA:			
Sensitivity 2.83V/1M	91.9dB	Linear excursion	±0.2 mm
Free air resonance Fs	630 Hz	Air gap flux density	-
DC resistance	2.9 ohm	Force factor BL Product	- Tm
V.C. inductance	- mH	Moving mass incl. air	0.3 g
Power 12dB@Hz	100W@2.5K	Outside diameter	104 mm
Effective cone area	5.4 cm <sup>2</sup>	Cutout diameter	72 mm
V.C. diameter	25 mm	Flange thickness	5 mm
V.C. height	2.2 mm	Depth	54.6 mm
Air gap height	2.5 mm	Screw Circle	92 mm

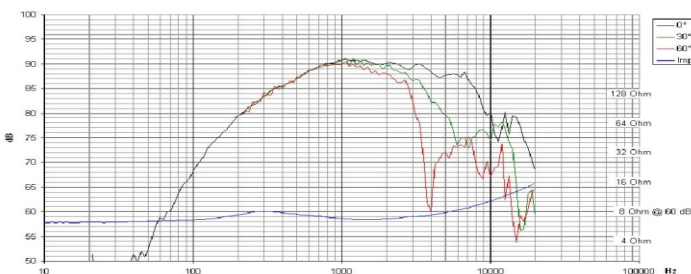


## D7608/9200-10 8Ω

The D7608/9200-10 is one of the last remaining 3" textile dome tweeters. A textile dome mid is a perfect choice for upper midrange where fast action is required. The pre-coated fabric dome has a very smooth and natural sounding response. The 3" voice coil provides good transient response and heat dispersion. An internal grill is used to protect the dome from being pushed in. The rear plate is perforated with holes, so the midrange requires the use of a 1 to 2 liter sealed and stuffed chamber (not included). This midrange has exceptional off axis response and would be good in a car if you can work out a chamber.



TECHNICAL DATA:			
Sensitivity 2.83V/1M	92.0dB	Linear excursion	±0.4.5 mm
Free air resonance Fs	300 Hz	Force factor BL Product	4.7 Tm
DC resistance	5.7 ohm	Moving mass incl. air	3.3 g
V.C. inductance	- mH	Outside diameter	152 mm
Power 12dB@Hz	80W@500Hz	Cutout diameter	115.5 mm
Effective cone area	55 cm <sup>2</sup>	Flange thickness	4 mm
V.C. diameter	76 mm	Depth	25.6 mm
V.C. height	2.9 mm	Screw Circle	134 mm
Air gap height	2.0 mm	***Must use with 1 to 2 liter chamber	

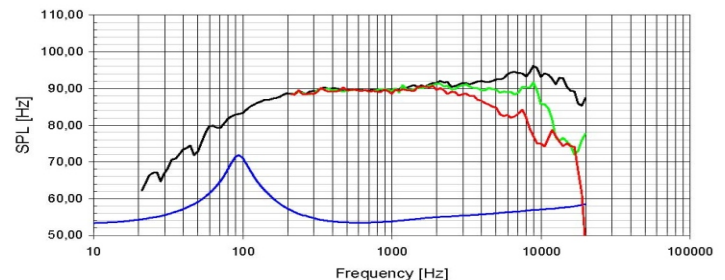


## 10F/4424G 4Ω 4" Fiberglass Cone Midrange

The Discovery series is designed for the discerning audiophile customer. The coated fiberglass cone reduces vibration and standing waves, and the vented motor system minimizes power compression. The combined result is a very open and dynamic sound. This midrange also features a strong neodymium magnet, NR surround and aluminum chassis. In 1 liter sealed your F3 is 275Hz, in 1.2 liters vented, 1" vent diameter x 3", your F3 is 125Hz. This driver has a very extended response.



TECHNICAL DATA:			
Sensitivity 2.83V/1M	89.8dB	Lin. & max. excursion	±2.6 / ±7mm
Free air resonance Fs	90 Hz	Force factor BL Product	3.9 Tm
DC resistance	3.2 ohm	Moving mass incl. air	2.78 g
V.C. inductance	0.1 mH	Net weight	0.3 kg
Power RMS	15W	Vas	2.06 liters
Effective cone area	36 cm <sup>2</sup>	Qms	3.21
V.C. diameter	20 mm	Qes	0.32
V.C. height	9.2 mm	Qts	0.30
Air gap height	4 mm	Cms	1.12 mm/N



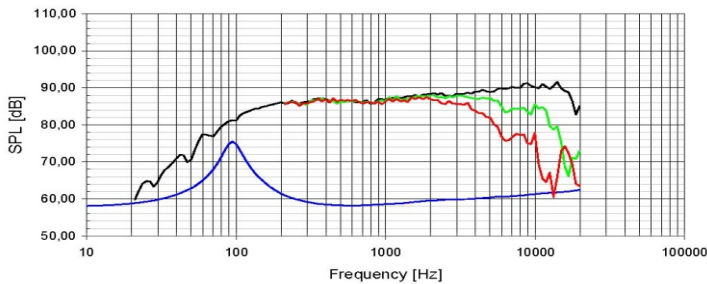
**10F/8424G 8Ω**  
**4" Fiberglass Cone Midrange**

The Discovery series is designed for the discerning audiophile customer. The coated fiberglass cone reduces vibration and standing waves, and the vented motor system minimizes power compression. The combined result is a very open and dynamic sound. This midrange also features a strong neodymium magnet, NR surround and aluminum chassis. In 1 liter sealed your F3 is 275Hz, in 1.2 liters vented, 1" vent diameter x 3", your F3 is 125Hz. This driver has a very extended response.



TECHNICAL DATA:

Sensitivity 2.83V/1M	86.6dB	Lin. & max. excursion	±2.6 / ±7mm
Free air resonance Fs	90 Hz	Force factor BL Product	4.8 Tm
DC resistance	5.8 ohm	Moving mass incl. air	2.77 g
V.C. inductance	0.1 mH	Net weight	0.3 kg
Power RMS	15W	Vas	2.1 liters
Effective cone area	36 cm <sup>2</sup>	Qms	3.49
V.C. diameter	20 mm	Qes	0.41
V.C. height	9.2 mm	Qts	0.37
Air gap height	4 mm	Cms	1.14 mm/N



**15M/4624G 4Ω**  
**5.25" Fiberglass Cone Mid**

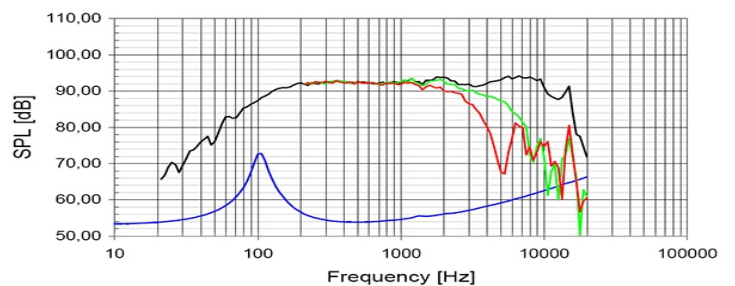
The Discovery series is designed for the discerning audiophile customer. The coated fiberglass cone reduces vibration and standing waves. The phase plug improves linearity and eliminates distortion caused by reflections that occur behind dust caps. The coated foam surround improves sensitivity.

Highlights: Aluminum Chassis, Fiberglass cone, coated foam surround, raised spider, aluminum shorting ring  
Flange 149mm, cutout 114mm, depth 60.9mm. Use in small sealed enclosure.



TECHNICAL DATA:

Sensitivity 2.83V/1M	92.4 dB	Lin. & max. excursion	±1.5 / ±8mm
Free air resonance Fs	100 Hz	Force factor BL Product	5.3 Tm
DC resistance	3.2 ohm	Moving mass incl. air	6.2 g
V.C. inductance	0.23 mH	Net weight	1.0 kg
Power RMS	75W	Vas	3.6 liters
Effective cone area	80 cm <sup>2</sup>	Qms	5.62
V.C. diameter	25 mm	Qes	0.47
V.C. height	8 mm	Qts	0.43
Air gap height	5 mm	Cms	0.41 mm/N



**12W/4524G 4Ω**  
**4.5" Fiberglass Cone Woofer**

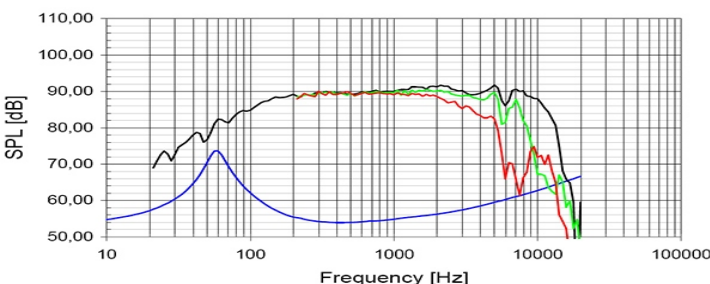
The Discovery series is designed for the discerning audiophile customer. The coated fiberglass cone reduces vibration and standing waves, and the vented motor system minimizes power compression. Suitable as small woofer or midrange in a larger system.

Driver Highlights: Aluminum Chassis, Fiberglass cone, NR rubber surround, Raised spider, shorting ring  
Flange 124.7mm, cutout 100mm, depth 58.4mm. Use vented for use as a woofer or sealed for use as a midrange.



TECHNICAL DATA:

Sensitivity 2.83V/1M	89.8dB	Lin. & max. excursion	±2.5 / ±9mm
Free air resonance Fs	51.6 Hz	Force factor BL Product	5.29 Tm
DC resistance	3.2 ohm	Moving mass incl. air	6.4 g
V.C. inductance	0.25 mH	Net weight	1.0 kg
Power RMS	40W	Vas	7.3 liters
Effective cone area	59 cm <sup>2</sup>	Qms	3.79
V.C. diameter	25 mm	Qes	0.24
V.C. height	10 mm	Qts	0.22
Air gap height	5 mm	Cms	1.48 mm/N



**12W/8524G 8Ω**  
**4.5" Fiberglass Cone Woofer**

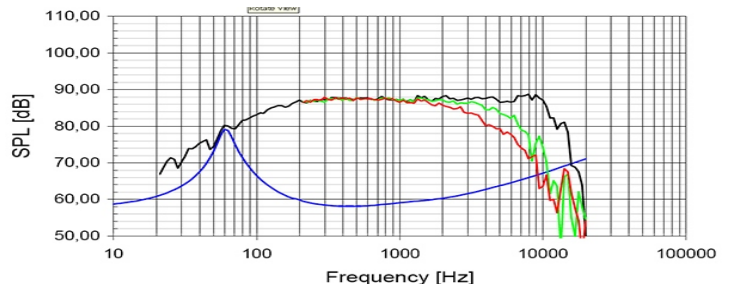
The Discovery series is designed for the discerning audiophile customer. The coated fiberglass cone reduces vibration and standing waves, and the vented motor system minimizes power compression. Suitable as small woofer or midrange in a larger system.

Driver Highlights: Aluminum Chassis, Fiberglass cone, NR rubber surround, Raised spider, shorting ring  
Flange 124.7mm, cutout 100mm, depth 58.4mm. Use vented for use as a woofer or sealed for use as a midrange.



TECHNICAL DATA:

Sensitivity 2.83V/1M	87.5dB	Lin. & max. excursion	±2.5 / ±10mm
Free air resonance Fs	53.0 Hz	Force factor BL Product	5.29 Tm
DC resistance	5.6 ohm	Moving mass incl. air	6.4 g
V.C. inductance	0.39 mH	Net weight	1.0 kg
Power RMS	40W	Vas	7.3 liters
Effective cone area	59 cm <sup>2</sup>	Qms	3.79
V.C. diameter	25 mm	Qes	0.24
V.C. height	10 mm	Qts	0.22
Air gap height	5 mm	Cms	1.48 mm/N



**15W/4434G 4Ω**  
**5.25" Fiberglass Cone Woofer**

The Discovery series is designed for the discerning audiophile customer. The coated fiberglass cone reduces vibration and standing waves, and the vented motor system minimizes power compression. The combined result is a very open and dynamic sound.

Driver Highlights: Aluminum Chassis, Fiberglass cone, NR rubber surround, Raised spider, shorting ring  
Flange 149mm, cutout 114mm, depth 60.9mm. In 4 liter box with 1.5" diameter vent by 4" long, F3 is 80Hz.



**15W/8434G 8Ω**  
**5.25" Fiberglass Cone Woofer**

The Discovery series is designed for the discerning audiophile customer. The coated fiberglass cone reduces vibration and standing waves, and the vented motor system minimizes power compression. The combined result is a very open and dynamic sound.

Driver Highlights: Aluminum Chassis, Fiberglass cone, NR rubber surround, raised spider, shorting ring  
Flange 149mm, cutout 114mm, depth 60.9mm. In 4 liter box with 1.5" diameter vent by 4" long, F3 is 80Hz.

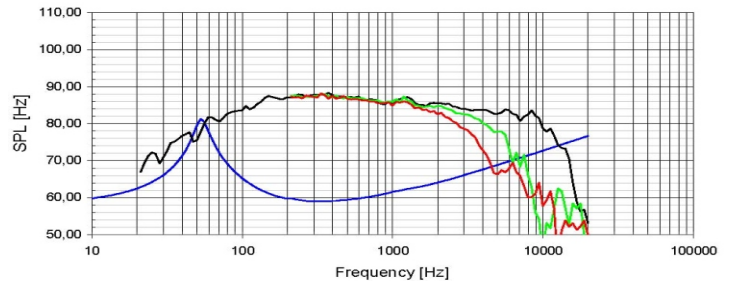
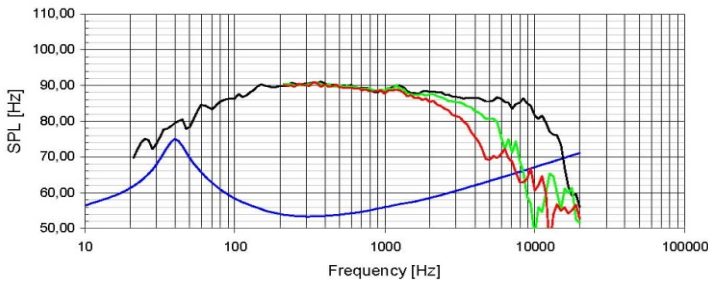


TECHNICAL DATA:

Sensitivity 2.83V/1M	89.7dB	Lin. & max. excursion	±4.3 / ±8mm
Free air resonance Fs	43 Hz	Force factor BL Product	5.9 Tm
DC resistance	3.0 ohm	Moving mass incl. air	9.6 g
V.C. inductance	0.5 mH	Net weight	1.2 kg
Power RMS	60W	Vas	12.89 liters
Effective cone area	80 cm <sup>2</sup>	Qms	3.69
V.C. diameter	32 mm	Qes	0.22
V.C. height	13.6 mm	Qts	0.21
Air gap height	5 mm	Cms	1.43 mm/N

TECHNICAL DATA:

Sensitivity 2.83V/1M	86.88dB	Lin. & max. excursion	±4.2 / ±8mm
Free air resonance Fs	45.41 Hz	Force factor BL Product	6.58 Tm
DC resistance	5.7 ohm	Moving mass incl. air	8.61 g
V.C. inductance	0.8 mH	Net weight	1.2 kg
Power RMS	60W	Vas	12.89 liters
Effective cone area	80 cm <sup>2</sup>	Qms	3.74
V.C. diameter	32 mm	Qes	0.27
V.C. height	13.4 mm	Qts	0.25
Air gap height	5 mm	Cms	1.43 mm/N



**18W/4434G 4Ω**  
**6.5" Fiberglass Cone Woofer**

The Discovery series is designed for the discerning audiophile customer. The coated fiberglass cone reduces vibration and standing waves, and the vented motor system minimizes power compression. The combined result is a very open and dynamic sound.

Driver Highlights: Aluminum Chassis, Fiberglass cone, NR rubber surround, Raised spider, shorting ring  
Flange 179.6mm, cutout 144.3mm, depth 73.2mm. In 15 liter box with 2" diameter vent by 4.5" long, F3 is 55Hz.



**18W/8434G 8Ω**  
**6.5" Fiberglass Cone Woofer**

The Discovery series is designed for the discerning audiophile customer. The coated fiberglass cone reduces vibration and standing waves, and the vented motor system minimizes power compression. The combined result is a very open and dynamic sound.

Driver Highlights: Aluminum Chassis, Fiberglass cone, NR rubber surround, Raised spider, shorting ring  
Flange 179.6mm, cutout 144.3mm, depth 73.2mm. In 15 liter box with 2" diameter vent by 4.5" long, F3 is 55Hz.

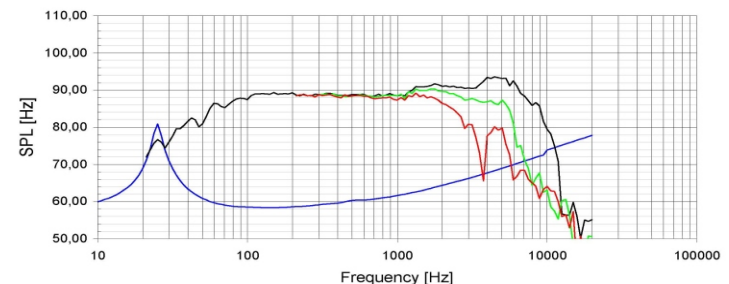
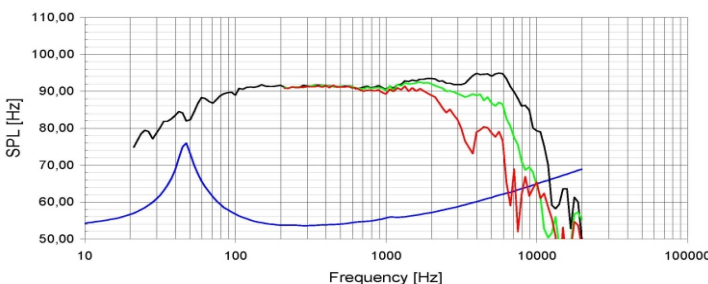


TECHNICAL DATA:

Sensitivity 2.83V/1M	91.3dB	Lin. & max. excursion	±4.3 / ±8mm
Free air resonance Fs	47.26 Hz	Force factor BL Product	6.02 Tm
DC resistance	3.0 ohm	Moving mass incl. air	14.41 g
V.C. inductance	0.39 mH	Net weight	1.3 kg
Power RMS	55W	Vas	20.86 liters
Effective cone area	137 cm <sup>2</sup>	Qms	7.81
V.C. diameter	32 mm	Qes	0.37
V.C. height	13.6 mm	Qts	0.35
Air gap height	5 mm	Cms	0.79 mm/N

TECHNICAL DATA:

Sensitivity 2.83V/1M	88.7dB	Lin. & max. excursion	±4.2 / ±8mm
Free air resonance Fs	49.9 Hz	Force factor BL Product	7.22 Tm
DC resistance	5.6 ohm	Moving mass incl. air	13.7 g
V.C. inductance	0.55 mH	Net weight	1.3 kg
Power RMS	55W	Vas	19.7 liters
Effective cone area	137 cm <sup>2</sup>	Qms	7.58
V.C. diameter	32 mm	Qes	0.46
V.C. height	13.4 mm	Qts	0.44
Air gap height	5 mm	Cms	0.74 mm/N



**22W/4434G 4Ω**  
**8" Fiberglass Cone Woofer**

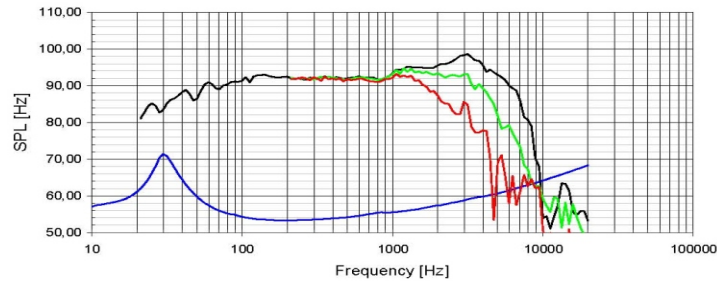
The Discovery series is designed for the discerning audiophile customer. The coated fiberglass cone reduces vibration and standing waves, and the vented motor system minimizes power compression. The combined result is a very open and dynamic sound.

Driver Highlights: Aluminum Chassis, Fiberglass cone, NR rubber surround, Raised spider

Flange 225mm, cutout 185mm, depth 84.5mm. In 35 liter box with 2" diameter vent by 4" long, F3 is 45Hz.



TECHNICAL DATA:			
Sensitivity 2.83V/1M	92.4dB	Lin. & max. excursion	±5.7 / ±12mm
Free air resonance Fs	25 Hz	Force factor BL Product	6.4 Tm
DC resistance	3.0 ohm	Moving mass incl. air	25.8 g
V.C. inductance	0.42 mH	Net weight	2.1 kg
Power RMS	70W	Vas	122.5 liters
Effective cone area	235 cm <sup>2</sup>	Qms	5.07
V.C. diameter	38 mm	Qes	0.30
V.C. height	17.3 mm	Qts	0.28
Air gap height	6 mm	Cms	1.57 mm/N



**22W/8434G 8Ω**  
**8" Fiberglass Cone Woofer**

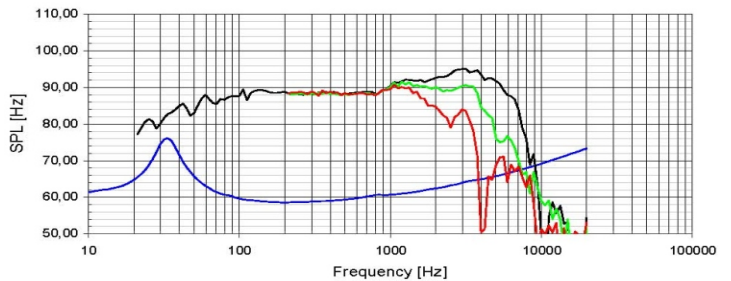
The Discovery series is designed for the discerning audiophile customer. The coated fiberglass cone reduces vibration and standing waves, and the vented motor system minimizes power compression. The combined result is a very open and dynamic sound.

Driver Highlights: Aluminum Chassis, Fiberglass cone, NR rubber surround, Raised spider

Flange 225mm, cutout 185mm, depth 84.5mm. In 35 liter box with 2" diameter vent by 6" long, F3 is 45Hz.



TECHNICAL DATA:			
Sensitivity 2.83V/1M	88.8dB	Lin. & max. excursion	±5.8 / ±12mm
Free air resonance Fs	26 Hz	Force factor BL Product	8.0 Tm
DC resistance	5.8 ohm	Moving mass incl. air	24.7 g
V.C. inductance	0.71 mH	Net weight	2.1 kg
Power RMS	70W	Vas	118.3 liters
Effective cone area	235 cm <sup>2</sup>	Qms	5.04
V.C. diameter	38 mm	Qes	0.37
V.C. height	17.5 mm	Qts	0.34
Air gap height	6 mm	Cms	1.52 mm/N



**26W/4534G 4Ω**  
**10" Fiberglass Cone Woofer**

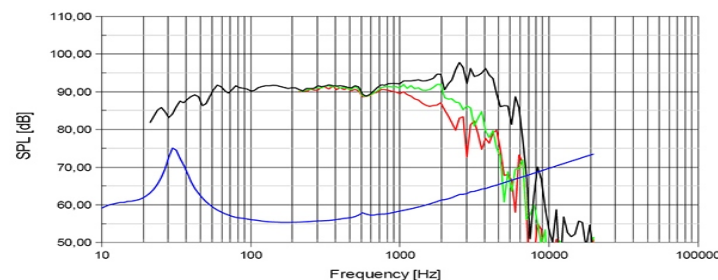
The Discovery series is designed for the discerning audiophile customer. The coated fiberglass cone reduces vibration and standing waves, and the vented motor system minimizes power compression. The combined result is a very open and dynamic sound.

Driver Highlights: Aluminum Chassis, Fiberglass cone, NR rubber surround, Raised spider

Flange 272mm, cutout 231mm, depth 100.5mm. In 70 liter box with 3" diameter vent by 7" long, F3 is 39Hz.



TECHNICAL DATA:			
Sensitivity 2.83V/1M	91 dB	Lin. & max. excursion	±6 / ±12mm
Free air resonance Fs	24 Hz	Force factor BL Product	9.3 Tm
DC resistance	3.7 ohm	Moving mass incl. air	47.6 g
V.C. inductance	0.70 mH	Net weight	2.8 kg
Power RMS	70W	Vas	162 liters
Effective cone area	353 cm <sup>2</sup>	Qms	11.4
V.C. diameter	38 mm	Qes	0.31
V.C. height	18 mm	Qts	0.30
Air gap height	6 mm	Cms	0.92 mm/N



**26W/8534G 8Ω**  
**10" Fiberglass Cone Woofer**

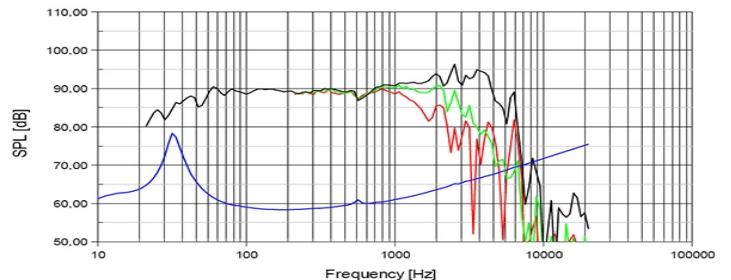
The Discovery series is designed for the discerning audiophile customer. The coated fiberglass cone reduces vibration and standing waves, and the vented motor system minimizes power compression. The combined result is a very open and dynamic sound.

Driver Highlights: Aluminum Chassis, Fiberglass cone, NR rubber surround, Raised spider

Flange 272mm, cutout 231mm, depth 100.5mm. In 70 liter box with 3" diameter vent by 7" long, F3 is 35Hz.



TECHNICAL DATA:			
Sensitivity 2.83V/1M	89 dB	Lin. & max. excursion	±6 / ±12mm
Free air resonance Fs	25 Hz	Force factor BL Product	10.3 Tm
DC resistance	5.6 ohm	Moving mass incl. air	46.7 g
V.C. inductance	0.92 mH	Net weight	2.8 kg
Power RMS	70W	Vas	153 liters
Effective cone area	353 cm <sup>2</sup>	Qms	11.4
V.C. diameter	38 mm	Qes	0.38
V.C. height	18 mm	Qts	0.37
Air gap height	6 mm	Cms	0.87 mm/N



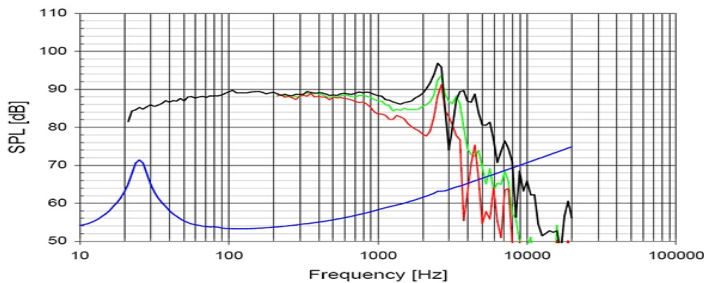
**26W/4558T 4Ω**  
**10" Aluminum Subwoofer**

This Discovery 10" subwoofer has many fantastic features. The cone is black anodized aluminum for stiffness. The dust cap is a layered paper and fiberglass. An aluminum shorting ring and aluminum pole piece extension is used to reduce distortion and power compression. A Titanium voice coil former improves power handling. The voice coil is vented below the spider and behind the dust cap for added VC cooling. Us in 2 cubic feet with 3" vent by 10" long for an F3 of 30Hz.



TECHNICAL DATA:

Sensitivity 2.83V/1M	89dB	Lin. & max. excursion	±12.5/±28mm
Free air resonance Fs	20 Hz	Force factor BL Product	10.7 Tm
DC resistance	2.5 ohm	Moving mass incl. air	101.7 g
V.C. inductance	0.80 mH	Magnet weight	2.25 kg
Power RMS	150W	Vas	104 liters
Effective cone area	352 cm <sup>2</sup>	Qms	5.59
V.C. diameter	51 mm	Qes	0.29
V.C. height	33 mm	Qts	0.28
Air gap height	8 mm	Cms	0.60 mm/N



**26W/0-00**  
**10" Aluminum Cone Passive Radiator**

This passive is built similarly to the active woofer. Same black anodized aluminum cone, paper/fiberglass dust cap, cast frame, low damping large roll rubber surround and Nomex spider. In place of the voice coil, a weight is added to tune the passive radiator to 11Hz. More mass could be added to the weight, but too much mass will make the passive sluggish and may reduce the live of the product.



TECHNICAL DATA:

Free air resonance Fs	11 Hz
Effective cone area	333 cm <sup>2</sup>
Max excursion	±28mm
Moving mass incl. air	400 g
Vas	80 liters
Qms	14
Cms	0.5 mm/N
Rms	2 kg/s

When paired with the 26W/4558T woofer in a 1 cubic foot box and an amplifier with a 25Hz boost, your F3 will be about 35Hz. Without a boost the F3 is about 45Hz.

When using the 1 cubic foot box with passive radiator in a car, without any boost and with 6dB of cabin gain, your F3 is about 19Hz. This should be very impressive in a car environment.

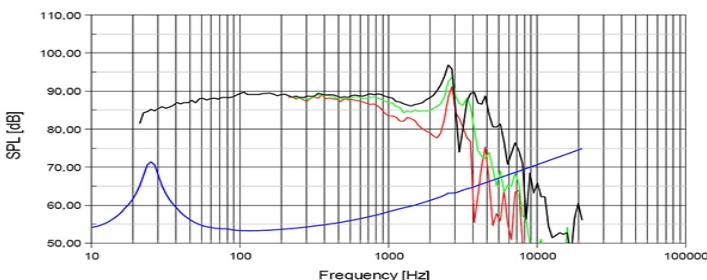
**30W/4558T 4Ω**  
**12" Aluminum Subwoofer**

This Discovery 12" subwoofer has many fantastic features. The cone is black anodized aluminum for stiffness. The dust cap is a layered paper and fiberglass. An aluminum shorting ring and aluminum pole piece extension is used to reduce distortion and power compression. A Titanium voice coil former improves power handling. The voice coil is vented below the spider and behind the dust cap for added VC cooling. Us in 2.5 cubic feet with 3" vent by 12" long for an F3 of 30Hz.



TECHNICAL DATA:

Sensitivity 2.83V/1M	89dB	Lin. & max. excursion	±12.5/ ±28mm
Free air resonance Fs	21 Hz	Force factor BL Product	10.7 Tm
DC resistance	2.6 ohm	Moving mass incl. air	124.2 g
V.C. inductance	0.84 mH	Magnet weight	2.25 kg
Power RMS	150W	Vas	122.5 liters
Effective cone area	466 cm <sup>2</sup>	Qms	5.07
V.C. diameter	51 mm	Qes	0.30
V.C. height	33 mm	Qts	0.28
Air gap height	8 mm	Cms	1.57 mm/N



**30W/0-00**  
**12" Aluminum Cone Passive Radiator**

This passive is built similarly to the active woofer. Same black anodized aluminum cone, paper/fiberglass dust cap, cast frame, low damping large roll rubber surround and Nomex spider. In place of the voice coil, a weight is added to tune the passive radiator to 11Hz. More mass could be added to the weight, but too much mass will make the passive sluggish and may reduce the live of the product.



TECHNICAL DATA:

Free air resonance Fs	10.5 Hz
Effective cone area	466 cm <sup>2</sup>
Max excursion	±28mm
Moving mass incl. air	425 g
Vas	170 liters
Qms	15.2
Cms	0.55 mm/N
Rms	1.8 kg/s

When paired with the 30W/4558T woofer, we recommend a 2.0 to 2.5 cubic foot box for an F3 of about 30Hz. This F3 is about the same whether you use a boost on the amp or not. If not using a 25Hz boost, you will have a leaner and tighter bass and with the boost you will have a more pronounced bass.

You can also use this passive with the 26W/4558T in a 1.5 cubic foot box with a similar F3 of 35Hz, but with a 2dB gain in efficiency from the 10" passive.

## 820012 Autosound 5" Car Component System

- » 130mm Mid/Woofers "EURO-DIN"
- » Aluminum Die Cast Basket
- » Neodymium Magnet System
- » Vented Pole Piece
- » Black Coated NRSC\* Fiberglass Cone
- » Low Loss Rubber Surround
- » 19mm Ring Dome Tweeters
- » Wedge Housing
- » Flange and Nut for Flush Mounting
- » Crossovers (2nd Order @ 2500Hz)
- » Grill, Cables and Screws

\*Non-Resonant-Suspension-Coupled Reduces breakup modes.



The Discovery car audio systems have been designed with the same engineering and attention to detail that has made their home speakers famous.

The standard frame size of the woofer and the two mounting options for the tweeter should make for an easy installation.

## 820013 Autosound 6" Car Component System

- » 165mm Mid/Woofers "EURO-DIN"
- » Aluminum Die Cast Basket
- » Neodymium Magnet System
- » Vented Pole Piece
- » Black Coated NRSC\* Fiberglass Cone
- » Low Loss Rubber Surround
- » 19mm Ring Dome Tweeters
- » Wedge Housing
- » Flange and Nut for Flush Mounting
- » Crossovers (2nd Order @ 3000Hz)
- » Grill, Cables and Screws

\*Non-Resonant-Suspension-Coupled Reduces breakup modes.



The Discovery car audio systems have been designed with the same engineering and attention to detail that has made their home speakers famous.

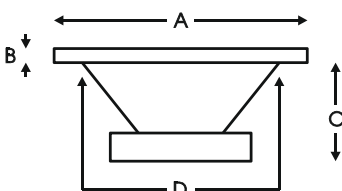
The standard frame size and multiply mounting options of the woofer and the two mounting options for the tweeter should make for an easy installation.

<b>SYSTEM DATA:</b>		Woofer diameter	130 mm
Nominal Impedance	4 ohm	At mounting tabs	152 mm
Sensitivity 2.83V/1M	88dB	Cut out diameter	113 mm
Frequency Range	70Hz - 28kHz	Depth	52 mm
Crossover frequency	2500Hz/12dB	Screw mount diameter	138 mm ±2.5
<b>WOOFER DATA:</b>		Flange thickness	3.8 mm
Free air resonance Fs	70 Hz	<b>TWEETER DATA:</b>	
Effective cone area Sd	79 cm <sup>2</sup>	Free air resonance Fs	1000Hz
V.C. diameter	32 mm	Effective cone area Sd	3.8 cm <sup>2</sup>
Linear excursion	±4mm	Voice coil diameter	19mm
Force factor BL Product	4.8 Tm	Weight	60 g
Moving mass incl. air	10 g	Tweeter diameter	42 mm
Vas	4.6 liters	Cut out diameter	39 mm
Qms	3.00	Depth	18 mm
Qes	0.60	Overall thickness	26 mm
Qts	0.50	Surface or Wedge mount	
Weight	510 g	25.4mm = 1"	

<b>SYSTEM DATA:</b>		Woofer diameter	165.5 mm
Nominal Impedance	4 ohm	Cut out diameter	141 mm
Sensitivity 2.83V/1M	90dB	Depth	63 mm
Frequency Range	60Hz - 28kHz	Screw mount diameter	156.5 mm ±.75
Crossover frequency	3000Hz/12dB	Flange thickness	3.3 mm
<b>WOOFER DATA:</b>		<b>TWEETER DATA:</b>	
Free air resonance Fs	60 Hz	Free air resonance Fs	1000Hz
Effective cone area Sd	133 cm <sup>2</sup>	Effective cone area Sd	3.8 cm <sup>2</sup>
V.C. diameter	32 mm	Voice coil diameter	19mm
Linear excursion	±4mm	Weight	60 g
Force factor BL Product	4.8 Tm	Tweeter diameter	42 mm
Moving mass incl. air	14 g	Cut out diameter	39 mm
Vas	12.6 liters	Depth	18 mm
Qms	3.00	Overall thickness	26 mm
Qes	0.75	Surface or Wedge mount	
Qts	0.60		
Weight	590 g	25.4mm = 1"	

Driver Dimensions in Millimeters				
Unit	A	B	C	D
D2004/6020-00, R2004/6020-00	55.5	5	29.3	42.1
D3004/6020-00, R3004/6020-00	61.9	5	21.5	48.5
D3004/6020-10, R3004/6020-10	61.9	5	55.4	48.5
D3004/6640-00, D3004/6600-00	104	5	23	77
D3004/6620-00, D3004/6620-01	104	5	23	77
R3004/6620-00, R3004/6620-01	104	5	23	77
R2904/7000, D2904/7100	104	5.9	25	70
D2905/9900	130	5	48	90
D2008/8512	92	3.5	69	37.5
D2010/8513	98	5	69	41
D2905/9300, 9500, 9700	104.5	3	41	74
D2904/9800	104.5	3	43	74
D3806/8200	125	4	45	92
D2606/9200 Discovery	104	4.2	27.1	72
D2606/9220 Discovery	104	4.2	38.9	72
D2604/8330 Discovery	104	5	54.6	72
D2608/9130 Discovery	104	4.5	32.3	72
R2604/8320 Discovery	104	5	39.8	72
R2604/8330 Discovery	104	4	54.6	72
D7608/9200-10 Discovery Mid	152	4	25.6	115.5
10F's Discovery	97.5	3.5	40	78
12MU's Illuminator	120	4	101	70
12M's Revelator	115.5	3	48.4	92
12W's Discovery	124.7	5	58.4	100

Driver Dimensions in Millimeters				
Unit	A	B	C	D
13M's Classic	130	6	45.5	103
15M & W's Discovery	149	4.8	61.9	114
15M's Revelator	148	6	71	125
15W's Revelator	148	6	71	125
15WU's Illuminator	149	6.5	123	91
18W's Discovery	179.6	5.2	73.2	144.3
18W's Revelator	182	5.5	77	156
18W's Classic	177	4	70	158
18WU's Illuminator	184	7.5	158	97.3
22W's Discovery	225	5.2	84.5	185
22W's Revelator	222	7	111	194
23W's Revelator	255	6	135	225
23W's Passives	255	6	73	225
25W's Classic	255	6	86	228
26W's Discovery	272	5.6	100.4	231
26W Discovery Subwoofer	270	5	135.5	240
26W Discovery Passive	270	5	70.9	240
26W's Revelator	260	7	124.7	228
30W Discovery Subwoofer	308	5	144.3	280
30W Discovery Passive	308	5	80	280
820012 & 820013 tweeter	42	8	18	39
820012 woofer	130	3.8	52	113
820013 woofer	165.5	3.3	63	141
Flow Resistor (SSV)	130	3	19	109



25.4mm = 1"  
28.3 liters = 1 cubic foot  
1 cubic foot = 1728 cubic inches  
Box Volume = L x W x H

We can assist you with your speaker design.

Founded in 1970, Scan-Speak is one of the oldest and most experienced loudspeaker manufacturers in the world. Their "Never Compromise" philosophy assures you as a customer that the product will be engineered and built to exceptional standards.

Please visit the Scan-speak website for a history of the company, as well as the most updated news, information and specifications.